



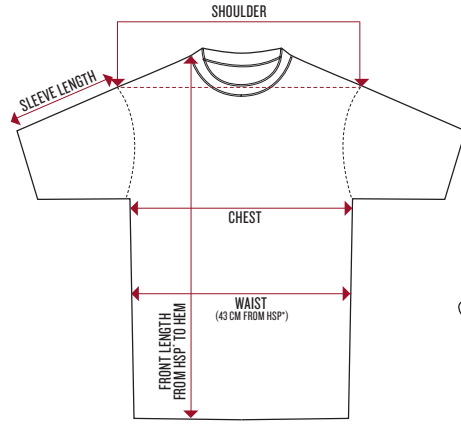
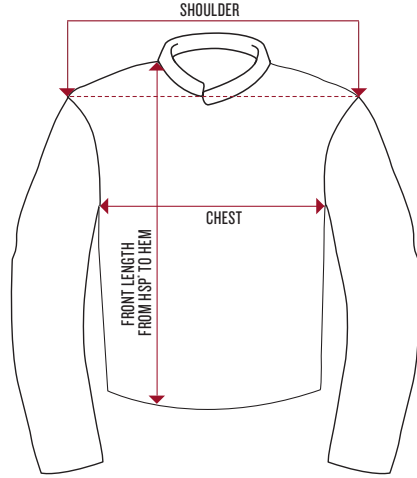
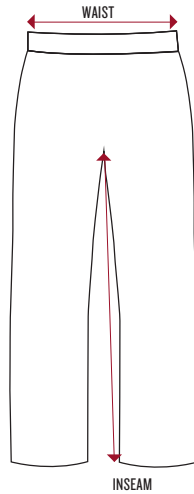
FALL/WINTER 2019

APPAREL & GIFTS

DEALER CATALOG

Indian[®]
MOTORCYCLE

APPAREL SIZE CHARTS



MEN'S V-TWIN FIT JACKETS													
SIZE	CHEST		SHOULDER		RIDE LEATHER FRONT LENGTH FROM HSP*		RIDE TEXTILE FRONT LENGTH FROM HSP*		MESH FRONT LENGTH FROM HSP*		RIDE CASUAL FRONT LENGTH FROM HSP*		
	IN	CM	IN	CM	IN	CM	IN	CM	IN	CM	IN	CM	
XS	40.2 - 41.7	102 - 106	20.1	51	25.2	64	25.6	65	25.6	65	25.6	65	
S	43.3 - 44.9	110 - 114	20.5	52	25.6	65	26.0	66	26.0	66	26.0	66	
M	46.5 - 48	118 - 122	20.9	53	26.0	66	26.4	67	26.4	67	26.4	67	
L	49.6 - 51.2	126 - 130	21.3	54	26.4	67	26.8	68	26.8	68	26.8	68	
XL	53.5 - 55.1	136 - 140	22.0	56	27.2	69	27.6	70	27.6	70	27.6	70	
XL-TALL	53.5 - 55.1	136 - 140	22.0	56	28.7	73	/	/	/	/	/	/	
2XL	57.5 - 59	146 - 150	22.8	58	28.0	71	28.3	72	28.3	72	28.3	72	
2XL-TALL	57.5 - 59	146 - 150	22.8	58	29.5	75	/	/	/	/	/	/	
3XL	61.4 - 63	156 - 160	23.6	60	28.7	73	29.1	74	29.1	74	29.1	74	
3XL-TALL	61.4 - 63	156 - 160	23.6	60	30.3	77	/	/	/	/	/	/	
4XL	65.4 - 66.9	166 - 170	24.4	62	29.5	75	29.9	76	29.9	76	29.9	76	
5XL	69.3 - 70.9	176 - 180	25.2	64	30.3	77	30.7	78	30.7	78	30.7	78	

MEN'S V-TWIN FIT VESTS							
SIZE	CHEST		SHOULDER		FRONT LENGTH FROM HSP*		
	IN	CM	IN	CM	IN	CM	
XS	39 - 40.2	99 - 102	17.7	45	27.0	68.5	
S	42.1 - 43.3	107 - 110	18.1	46	27.4	69.5	
M	45.3 - 46.5	115 - 118	18.5	47	27.8	70.5	
L	48.4 - 49.6	123 - 126	18.9	48	28.1	71.5	
XL	52.4 - 53.5	133 - 136	19.7	50	28.9	73.5	
2XL	56.3 - 57.5	143 - 146	20.5	52	29.7	75.5	
3XL	60.2 - 61.4	153 - 156	21.3	54	30.5	77.5	
4XL	64.2 - 65.4	163 - 166	22.0	56	31.3	79.5	
5XL	68.1 - 69.3	173 - 176	22.8	58	40.0	101.5	

MEN'S RELAXED FIT JACKETS						
SIZE	CHEST		SHOULDER		FRONT LENGTH FROM HSP*	
	IN	CM	IN	CM	IN	CM
S	50	127	20.4	51.8	24.5	62
M	52.5	133.3	21	53.3	25	63.5
L	58	147.3	22	55.9	26	65.5
XL	62.5	158.8	23	58.4	26.5	67
2XL	66	167.6	24	61	27	69
3XL	68	172.7	24.5	62.2	27.5	70

Relaxed fit is wider in the shoulder, body and sleeve and shorter in body length than the V-Twin fit.

MEN'S CHAPS					
SIZE	WAIST		INSEAM		
	IN	CM	IN	CM	
M	35	89	33	84.5	
L	38	97	33	84.5	
XL	41	105	33	84.5	
2XL	44.5	113	33	84.5	
3XL	47.5	121	33	84.5	
4XL	51	129	33	84.5	
5XL	54	137	33	84.5	

RAINSUIT- JACKET						
SIZE	CHEST		SHOULDER		FRONT LENGTH FROM HSP*	
	IN	CM	IN	CM	IN	CM
XS	44.9	114	21.3	54	27.0	68.5
S	48.0	122	21.7	55	27.4	69.5
M	51.2	130	22.0	56	27.8	70.5
L	54.3	138	22.4	57	28.1	71.5
XL	58.3	148	23.2	59	28.9	73.5
2XL	62.2	158	24.0	61	29.7	75.5
3XL	66.1	168	24.8	63	30.5	77.5
4XL	70.1	178	25.6	65	31.3	79.5
5XL	74.0	188	26.4	67	32.1	81.5

RAINSUIT- PANTS					
SIZE	WAIST (RELAXED)		INSEAM		
	IN	CM	IN	CM	
XS	33.1	84	31.9	81	
S	34.6	88	32.3	82	
M	36.2	92	32.7	83	
L	39.4	100	33.3	84.5	
XL	42.5	108	33.9	86	
2XL	45.7	116	34.4	87.5	
3XL	48.8	124	35.0	89	
4XL	52.0	132	35.6	90.5	
5XL	55.1	140	36.2	92	

WOMEN'S V-TWIN FIT JACKETS												
SIZE	CHEST		SHOULDER		RIDE LEATHER FRONT LENGTH FROM HSP*		RIDE MESH FRONT LENGTH FROM HSP*		CASUAL LEATHER FRONT LENGTH FROM HSP*		CASUAL TEXTILE FRONT LENGTH FROM HSP*	
	IN	CM	IN	CM	IN	CM	IN	CM	IN	CM	IN	CM
XS	37.0	94	16.5	42	24.0	61	25.8	65.5	21.9	55.5	24.4	62
S	39.4	100	16.9	43	24.8	63	26.6	67.5	22.6	57.5	25.2	64
M	41.7	106	17.3	44	25.6	65	27.4	69.5	23.4	59.5	26.0	66
L	44.1	112	17.7	45	26.4	67	28.1	71.5	24.2	61.5	26.8	68
XL	47.2	120	18.5	47	27.2	69	28.9	73.5	25.0	63.5	27.6	70
2XL	50.4	128	19.3	49	28.0	71	29.7	75.5	25.8	65.5	28.3	72
3XL	53.5	136	20.1	51	28.7	73	30.5	77.5	26.6	67.5	29.1	74

WOMEN'S V-TWIN FIT VESTS						
SIZE	CHEST		SHOULDER		FRONT LENGTH FROM HSP*	
	IN	CM	IN	CM	IN	CM
XS	34.6	88	10.8	27.5	21.3	54
S	37.0	94	11.4	29	22.0	56
M	39.4	100	12.0	30.5	22.8	58
L	41.7	106	12.6	32	23.6	60
XL	44.9	114	13.4	34	24.4	62
2XL	48.0	122	14.2	36	25.2	64
3XL	51.2	130	15.0	38	26.0	66
1W	69.7	177	12.6	32	24.4	62
2W	49.2	125	13.4	34	25.2	64
3W	52.4	133	14.2	36	26.0	66

WOMEN'S CHAPS					
SIZE	WAIST		INSEAM		
	IN	CM	IN	CM	
S	35.5	90	33	83.5	
M	37	94	33	83.5	
L	40	102	33	83.5	
XL	43	110	33	83.5	
2XL	46.5	118	33	83.5	
3XL	50	126	33	83.5	
4XL	53	134	33	83.5	
5XL	56	142	33	83.5	

PART NUMBER SIZE GUIDE- APPAREL**																
SIZE	XS	S	M	L	1T	XL	XLTL	2XL	2XLTL	3XL	3XLTL	4XL	5XL	1W	2W	3W
PART #	01	02	03	06	08	09	11	12	13	14	20	15	16	17	18	19

**Based on the size you are ordering, add the above number to the end of the item's part number. 1T, XLTL, 2XLTL, 3XLTL are tall sizes.

PART NUMBER SIZE GUIDE- FOOTWEAR**												
SIZE	05	06	07	08	09	10	11	12	13			
PART #	05	06	07	08	09	10	11	12	13			

**Based on the size you are ordering, add the above number to the end of the item's part number.





PHOENIX JACKET, BROWN **CE**

VENTED

A contemporary brown leather riding jacket. Ventilation zips on the sleeves and back keep things cool in warmer temperatures. Contrast stitch detailing features across the sleeves and lower body.

FEATURES

0.8-0.9mm leather shell
Fixed lining
Removable liner- quilted vest
3 exterior & 1 interior pocket
Snap cuffs
V-Twin Fit
CE certified; EU Regulation 2016/425
prEN 17092-4:2018

ADDITIONAL FEATURES

Removable CE protectors in shoulders & elbows (EN 1621-1:2012); action back; antique brass zippers; embossed script logo at back neck; snap down collar; adjustable tabs at waist and hip

XS-3XL

2868917



TALL SIZES

BECKMAN JACKET **CE**

VENTED

A timeless leather riding jacket in jet black leather. The self-colored stripes and angular panel lines are modern and masculine. Hidden vents help with airflow on warm days and a removable quilted liner offers insulation on cooler rides.

FEATURES

1.0-1.2mm leather shell
Fixed lining- airmesh
Removable liner- quilted vest
Hidden ventilation panels on arms & back
Reflective piping on back
2 exterior & 1 internal pocket
Side adjust zippers & snap wrist cuffs
V-Twin Fit
CE certified; EU Regulation 2016/425
prEN 17092-4:2018

ADDITIONAL FEATURES

Removable CE protectors in shoulders & elbows (EN 1621-1:2012); action back; antique brass zippers; embroidered logo on front; applique & embroidered branding on back; snap down collar

S-5XL, XLT-3XLT

2869635



CLASSIC JACKET 2 **CE**

VENTED

A true Indian Motorcycle® classic. This timeless style jacket features a slightly worn dark brown leather. Snap down collar stops any flapping when riding. The jacket also features a removable quilted plaid liner for cooler days.

FEATURES

1.2-1.4mm thick leather shell
Fixed lining- plaid
Removable liner- quilted plaid vest
2 exterior, 1 chest & 1 interior pockets
Zippered side expansion panels; snap wrist adjustment tabs
V-Twin Fit
CE certified; Directive 89/686/CE V06.
French Protocol Level 1

ADDITIONAL FEATURES

Removable CE protectors in shoulders & elbows; snap down collar; antique brass zippers; embroidered script logo on front left; applique/embroidered script logo on back; circle headaddress patch on right sleeve

S-5XL

2867669



OUTSIDER VEST

This black leather vest is a modern classic. It features secure chest pockets with flaps and zip adjustable sides.

CASUAL

FEATURES

- 0.9-1.0mm thick leather shell
- Fixed lining
- 4 exterior & 1 interior pocket
- Zip side expansion panels
- V-Twin Fit

ADDITIONAL FEATURES

Antique brass zip; stitch detailing on front; embroidered front logo applique logo on back

S-5XL

2868674



INDIAN MOTORCYCLE® VEST 2

This black leather vest with laced side seams is a traditional staple for the cruiser rider. The laces can be adjusted to allow expansion where needed. The logos are a combination of embroidery and leather applique.

CASUAL

FEATURES

- 1.0-1.2mm thick dull leather shell
- Fixed lining
- 2 exterior & 1 interior pockets
- V-Twin Fit

ADDITIONAL FEATURES

Antique brass snaps; lace up sides; embroidered front logo; applique & embroidered logo on back

S-5XL

2863711



FLAT TRACK JACKET CE

VENTED A racing inspired jacket featuring colored panels and a removable quilted liner to keep the wearer warm and dry.

FEATURES

Fixed lining- airmesh
Removable liner- quilted vest
2 exterior & 1 interior pockets
Snap cuffs
V-Twin Fit
CE certified; EU Regulation 2016/425
prEN 17092-4:2018

ADDITIONAL FEATURES

Removable CE protectors in shoulders & elbows (EN 1621-1:2012); action back; snap down collar; contrast stripe detailing across sleeves; adjustable side tabs; embroidered & applique branding on front; American flag patch on left sleeve, Motor Oil patch on right sleeve

XS-3XL 2869638



FLINT JACKET CE

VENTED A water resistant jacket featuring contrast colored panels and a removable quilted liner to keep the wearer warm and dry. Ventilation panels allow cooling airflow on warmer days.

FEATURES

Fixed Lining- airmesh
Removable liner- quilted vest
Hidden ventilation panels on arms & back
Reflective piping on back
2 exterior & 1 interior pocket
Side adjust zippers & snap wrist cuffs
V-Twin Fit
CE certified; EU Regulation 2016/425
prEN 17092-4:2018

ADDITIONAL FEATURES

Removable CE protectors in shoulders & elbows (EN 1621-1:2012); action back; embroidered logo on front; applique & embroidered branding on back; snap down collar; circle headdress patch on right sleeve

S-5XL 2869636



SHIFT JACKET

WAXED COTTON A modern, utility look waxed cotton jacket with military inspired details around the shoulders, collar and underarms. Secure pocket details on the front add style and practicality.

FEATURES

Fixed lining
Removable liner- quilted vest
4 exterior & 2 interior pockets
Zippered side expansion panels; snap cuffs
V-Twin Fit
CE certified; EU Regulation 2016/425
prEN 17092-4:2018

ADDITIONAL FEATURES

Removable CE protectors in shoulders & elbows; antique brass zippers; hidden snap down collar; action back; leather patch on front; woven patch at back neck

S-5XL 2868996



TALL SIZES

SPRINGFIELD MESH 2 JACKET CE

MESH

A slick update on the original Springfield Mesh jacket for riding in warmer climates. Mesh panels allow air to flow freely helping the rider stay cool. There are leather powerstretch panels on the elbows for flexibility. A removable lightweight windproof liner offers insulation when temperatures drop.

FEATURES

Fixed lining- airmesh
Windproof removable liner- long sleeve
2 exterior & 2 interior pockets
Powerstretch elbow panels; zip side adjusters; snap cuff
V-Twin Fit
CE certified; EU Regulation 2016/425 prEN 17092-4:2018

ADDITIONAL FEATURES

Removable CE protectors in shoulders & elbows (EN 1621-1:2012); action back; 3M® reflective piping; patch on chest; script logo embroidered & applique on back; headdress patch on right sleeve; American flag patch on left sleeve

S-5XL, XLT-3XLT 2868916



DRIFTER MESH JACKET

MESH

A jacket for warmer days. The mesh panels allow maximum air flow. There are leather panels on the elbows. A removable lightweight windproof liner offers insulation when temperatures drop.

FEATURES

Polyester mesh with leather elbow panels
Fixed lining- airmesh
Windproof removable liner
2 exterior & 1 interior pocket
Side adjustment zips, snap collar & wrists
V-Twin Fit
CE certified; EU Regulation 2016/425 prEN 17092-4:2018

ADDITIONAL FEATURES

Removable CE protectors in shoulders and elbows (EN 1621-1:2012); action back; antique brass snaps; script logo embroidered on chest; embroidered and applique logo on back; headdress patch on right sleeve

S-3XL 2868883



BOMBER JACKET

CASUAL

This is a lightweight casual jacket with large branding on the back.

FEATURES

Fixed lining
3 exterior & 2 interior pockets
Rib knit collar, cuffs & hem
V-Twin Fit

ADDITIONAL FEATURES

Snap close waist pockets; gun metal zips; embroidered logo on front and back; "Since 1901" embroidered on right sleeve

S-5XL 2867631



FINAL SEASON

RETRO BOMBER JACKET

CASUAL

This is a vintage style casual jacket with a branded patch on the chest and striped trim details.

FEATURES

- Fixed lining
- 2 exterior & 1 interior pockets
- Rib knit collar, cuffs & hem
- V-Twin Fit

ADDITIONAL FEATURES

- Zip close waist pockets; woven logo patch on chest

XS-3XL

2868919



INDIAN MOTORCYCLE® COLOR BLOCK RAINSUIT - UNISEX

WATERPROOF

A two piece jacket and pant rainsuit constructed of waterproof and breathable nylon. Every seam is taped to ensure you stay dry in the rain. Designed to be worn over your leathers this is a large fit. The pant has removable suspenders.

FEATURES

- Fixed lining- airmesh
- 1 interior pocket
- Adjustable Velcro® cuffs & waist; stirrups;
- full length Velcro® on front opening to reinforce zip closure
- V-Twin Fit

ADDITIONAL FEATURES

- 100% waterproof & breathable; reflective piping;
- removable suspenders; stows into self storage bag attached to jacket lining; branding on the front, legs & back

XS-5XL

2867447



TALL SIZES

1901 JACKET

CASUAL

A lightweight casual jacket with full on cool Indian Motorcycle® branding. Retro chest and sleeve stripes have a vintage race feel.

FEATURES

- Fixed lining- airmesh
- 2 exterior, 2 interior pockets
- V-Twin Fit

ADDITIONAL FEATURES

- Water resistant & breathable;
- snap fasten collar; action back;
- embroidered & applique script logo on front; printed graphic on back;
- woven patches on left & right sleeve

S-5XL, XLT-3XLT 2866177





FINAL SEASON

ADELINE JACKET

CASUAL

A black leather jacket with decorative lace detailing on the back and bold stud detailing that flatters the figure. Laced side-seams allow expansion where needed.

FEATURES

0.55-0.65mm thick leather shell
Fixed lining
2 exterior & 1 interior pockets
Twin snap wrist
Adjustable side lacing
Women's V-Twin Fit

ADDITIONAL FEATURES

Antique brass zip & studs; back lacing; embroidered & applique logo on back; snap collar

XS-3XL

2868914



CASUAL

INDIAN MOTORCYCLE® VEST 2

A traditional staple for cruiser riders. The side laces can be adjusted to allow expansion where needed. The logos are a combination of embroidery and leather applique. Branded rivets decorate the shoulder and back panel.

FEATURES

1.0-1.2mm thick leather shell
Fixed lining
2 exterior & 1 interior pockets
Women's V-Twin Fit

ADDITIONAL FEATURES

Antique brass snaps; lace up sides; embroidered front logo; applique & embroidered logo on back

XS-3XL, 1W-3W

2863716



MESH

SPRINGFIELD MESH 2 JACKET



A slick update on the original Springfield Mesh jacket for riding in warmer climates. Mesh panels allow air to flow freely, helping the rider stay cool. There are leather powerstretch panels on the elbows for flexibility. A removable lightweight windproof liner offers insulation when temperatures drop.

FEATURES

Fixed lining- airmesh
Windproof removable liner- long sleeve
2 exterior & 2 interior pockets
Powerstretch elbow panels;
zip side panels; snap cuffs
Women's V-Twin Fit
CE certified; EU Regulation 2016/425
prEN 17092-4:2018

ADDITIONAL FEATURES

Removable CE protectors in shoulders & elbows (EN 1621-1:2012); 3M® reflective piping; action back; patch on chest; script logo applique & embroidered on back; leather logo patch on back; headdress patch on right sleeve; American flag patch on left sleeve

XS-3XL

2869625



SUMMER **DRIFTER MESH GLOVE** **CE**
Constructed using a combination of mesh, to allow airflow, and leather palm and finger panels. This lightweight glove is easy to wear in warm weather conditions.

FEATURES

Mesh glove with leather palm & wrist
Velcro® wrist closure
Touchscreen leather on fingertip & thumb
Mens CE certified; Directive 89/686/EEC.
EN 13594:2015

S-4XL **2867449**



SUMMER **FINAL SEASON MESH GLOVE** **CE**
A combination of mesh, to allow airflow, and leather palm and finger panels construct this summer glove. The lightweight design offers very little bulk and is easy to wear in warm weather conditions.

FEATURES

Mesh glove with leather palm & wrist
Gel padded palm
Velcro® wrist closure
Mens & Womens CE certified; Directive
89/686/EEC. French Protocol Level 1

MEN'S: S-4XL **2867646**
WOMEN'S: S-XL **2867647**



SUMMER **FINGERLESS GLOVE**
A cruiser style fingerless glove in black leather. A double leather and gel palm panel adds comfort. The hooks on the end of the finger tips allow the glove to be removed easily.

FEATURES

Full leather construction
Gel padded palm
Velcro® wrist closure
Laser etched logo

MEN'S: S-4XL **2863720**
WOMEN'S: S-XL **2863721**



SUMMER **CINDER GLOVE** **CE**
A sporty style glove with contrasting perforated panels, Velcro® closure, and emblem patch. Complements nicely with the Benjamin Jacket.

FEATURES

Full leather construction
Padded palm
Velcro® wrist closure
Touchscreen fingertip & thumb
Mens CE certified; Directive 89/686/EEC.
EN 13594:2015

S-4XL **2868678**



SOLO GLOVE



MID SEASON A strong and lightweight glove with hard knuckle protector offers protection and modern style.

FEATURES

Mixed textile & leather construction
 Hard knuckle protector
 Velcro® wrist closure
 Touchscreen fingertip & thumb
 Mens CE certified; Directive 89/686/EEC.
 EN 13594:2015

S-4XL **2868679**



FINAL SEASON

RETRO GLOVE



MID SEASON Black leather with red and cream leather panels. The padded knuckle, perforated finger panels and double leather contrast palms make these as comfortable as they are cool.

FEATURES

Full leather construction
 Perforated inner finger panels
 Padded knuckles
 Velcro® wrist closure
 Mens & Womens CE certified; Directive 89/686/EEC. French Protocol Level 1

MEN'S: S-4XL **2867649**
WOMEN'S: S-XL **2867650**



PASSAGE GLOVE



MID SEASON A modern and stylish glove with hard knuckle protector, outer padding and Velcro® strap closure.

FEATURES

Mixed textile & leather construction
 Hard knuckle protector
 Velcro® wrist closure
 Touchscreen finger & thumb tip
 Mens CE certified; Directive 89/686/EEC.
 EN 13594:2015

S-4XL **2868680**



NEW

WINTER GLOVE

WINTER A warm insulated glove for winter riding, with hard knuckle protectors. A Velcro® wrist adjuster and draw cord cuff keep the cold out.

FEATURES

Mixed textile & leather construction
 Hard knuckle protector
 Velcro® wrist closure
 Touchscreen index & thumb tips
 Men's CE certified; EU Regulation 2016/425. EN13594:2015

S-4XL **2869729**



CLASSIC GLOVE



MID SEASON Mid season, classic black leather glove. Simple styling with double leather panels, perforated leather finger panels and Velcro® closure.

FEATURES

Full leather construction
 Perforated inner finger panels
 Exposed seam construction with double leather panel on palms
 Velcro® wrist closure
 Mens & Womens certified EU Regulation 2016/425 EN13594:2015

MEN'S: S-4XL **2869717**
WOMEN'S: S-XL **2869718**



DEERSKIN STRAP GLOVE

MID SEASON A deerskin glove in a classic style with Velcro® closure for wearing mid season.

FEATURES

Full deerskin leather construction
 Heat branding on wrist
 Velcro® wrist closure

S-4XL **2868677**



NEW

**ADVENTURE HELMET
MATTE STRIPE**

FEATURES

Matte finish
100% fiberglass outer shell; EPS inner shell
Fixed lining
Weight: 1250g
Safety: DOT certified; ECE certified

ADDITIONAL FEATURES

Detachable cheek pads & sun peak;
D-ring closure; goggle fastener at back;
Bluetooth® compatible

XS-2XL 2869727



NEW

**ADVENTURE HELMET -
GLOSS BLACK**

FEATURES

Glossy finish
100% fiberglass outer shell; EPS inner shell
Fixed lining
Weight: 1250g
Safety: DOT certified; ECE certified

ADDITIONAL FEATURES

Detachable cheek pads & sun peak;
D-ring closure; goggle fastener at back;
Bluetooth® compatible

XS-2XL 2869728



ROUTE MODULAR HELMET

FEATURES

Matte finish
70% polycarbonate, 30% ABS outer shell;
EPS inner shell
Removable, washable cheek pads
Weight: 1600g
Safety: DOT certified; ECE certified

ADDITIONAL FEATURES

Anti-fog Pinlock® 30; top & rear vents; inner
sun visor; Bluetooth® compatible

XS-2XL 2867637





OUTPOST HELMET

FEATURES

Glossy ABS outer shell; EPS inner shell
Removable, washable lining
Weight: 1550g
Safety: DOT certified; ECE certified

ADDITIONAL FEATURES

Anti-fog Pinlock® 30, anti-scratch shield coatings; chin, top & rear vents; Bluetooth® compatible

XS-2XL 2868682



FREEWAY HELMET

FEATURES

Matte ABS outer shell; EPS inner shell
Removable, washable lining
Weight: 1450g
Safety: DOT certified; ECE certified

ADDITIONAL FEATURES

Anti-fog Pinlock 30, anti-scratch shield coatings; chin & top vents; Bluetooth® compatible, inner sun visor

XS-2XL 2867453



LIBERTY JET HELMET

FEATURES

Matte ABS outer shell; EPS inner shell
Removable, washable lining
Weight: 1250g
Safety: DOT certified; ECE certified

ADDITIONAL FEATURES

Anti-scratch visor; top & rear vents; inner sun visor; Bluetooth® compatible

XS-2XL 2867454



NEW

ADVENTURE HELMET SUNPEAK

Only works with the following helmets, 2869727 & 2869728.

ONE SIZE

MATTE STRIPE 2869793
WHITE 2869794



ROUTE MODULAR HELMET VISOR

ONE SIZE 2867643



FREEWAY FULL FACE HELMET VISOR

ONE SIZE 2867460



LIBERTY JET HELMET VISOR

ONE SIZE 2867461



RETRO FULL FACE HELMET VISOR

Only works with the following full face helmets, 2868683 & 2869630.

ONE SIZE

GRAY 2868890
CLEAR 2868829



MATTE STRIPE FULL FACE HELMET

FEATURES

UV lacquer finish
100% fiberglass outer shell; EPS inner shell
Fixed inner lining
Weight: 1450g
Safety: DOT certified; ECE certified

ADDITIONAL FEATURES

Anti-fog Pinlock® 30, anti-scratch shield coatings; detachable cheek pads; D-ring closure; Bluetooth® compatible

XS-4XL 2869630



RETRO FULL FACE HELMET

FEATURES

Glossy, UV lacquer finish
100% fiberglass outer shell; EPS inner shell
Fixed inner lining
Weight: 1450g
Safety: DOT certified; ECE certified

ADDITIONAL FEATURES

Anti-fog Pinlock® 30, anti-scratch shield coatings; detachable cheek pads; quick release chin strap; Bluetooth® compatible

XS-2XL 2868683



BIG SIZES

RETRO OPEN FACE HELMET, RED

FEATURES

Glossy UV lacquer finish
100% fiberglass outer shell; EPS inner shell
Fixed lining
Weight: 1150g
Safety: DOT certified; ECE certified

ADDITIONAL FEATURES

Detachable sunpeak & cheek pads;
D ring closure; goggle fastener at back;
Bluetooth® compatible; Chrome piping

XS-4XL 2868872





BIG SIZES

RETRO OPEN FACE HELMET, BLACK

FEATURES

Glossy UV lacquer finish
 100% fiberglass outer shell; EPS inner shell
 Fixed lining
 Weight: 1150g
 Safety: DOT certified; ECE certified

ADDITIONAL FEATURES

Detachable sunpeak & cheek pads;
 D ring closure; goggle fastener at back;
 Bluetooth® compatible; Chrome piping

XS-4XL

2868870



BIG SIZES

RETRO OPEN FACE HELMET, MATTE BLACK

FEATURES

Matte UV lacquer finish
 100% fiberglass outer shell; EPS inner shell
 Fixed lining
 Weight: 1150g
 Safety: DOT certified; ECE certified

ADDITIONAL FEATURES

Detachable sunpeak & cheek pads; D ring closure;
 goggle fastener at back; Bluetooth® compatible

XS-4XL

2868869



BIG SIZES

RETRO OPEN FACE HELMET, SILVER

FEATURES

Glossy UV lacquer finish
 100% fiberglass outer shell; EPS inner shell
 Fixed lining
 Weight: 1150g
 Safety: DOT certified; ECE certified

ADDITIONAL FEATURES

Detachable sunpeak & cheek pads;
 D ring closure; goggle fastener at back;
 Bluetooth® compatible

XS-4XL

2868871



BIG SIZES

CARBON OPEN FACE HELMET

FEATURES

Matte UV lacquer finish
100% carbon fiber outer shell; EPS inner shell
Fixed lining
Weight: 1050g
Safety: DOT certified; ECE certified

ADDITIONAL FEATURES

Detachable sunpeak & cheek pads;
D ring closure; goggle fastener at back;
Bluetooth® compatible

XS-4XL 2869633



BIG SIZES

OPEN FACE HELMET - WHITE STRIPE

FEATURES

Glossy UV lacquer finish
100% fiberglass outer shell; EPS inner shell
Fixed lining
Weight: 1150g
Safety: DOT certified; ECE certified

ADDITIONAL FEATURES

Detachable sunpeak & cheek pads;
D ring closure; goggle fastener at back;
Bluetooth® compatible

XS-4XL 2869628



BIG SIZES

OPEN FACE HELMET - MATTE STRIPE

FEATURES

Matte UV lacquer finish
100% fiberglass outer shell; EPS inner shell
Fixed lining
Weight: 1150g
Safety: DOT certified; ECE certified

ADDITIONAL FEATURES

Detachable sunpeak & cheek pads;
D ring closure; goggle fastener at back;
Bluetooth® compatible

XS-4XL 2869629





BIG SIZES

TWO TONE OPEN FACE HELMET

FEATURES

Glossy UV lacquer finish
 100% fiberglass outer shell; EPS inner shell
 Fixed lining
 Weight: 1150g
 Safety: DOT certified; ECE certified

ADDITIONAL FEATURES

Detachable sunpeak & cheek pads;
 D ring closure; goggle fastener at back;
 Bluetooth® compatible; Chrome piping

XS-4XL 2868897



RETRO OPEN FACE HELMET BUBBLE VISOR

Only works with the following open face helmets: 2868684, 2868869, 2868870, 2868871, 2868872, 2868897, 2868895, 2869628, 2869633 & 2869629.

ONE SIZE

- A. CLEAR 2868873**
- B. GRAY 2868874**
- C. REFLECTIVE SILVER 2868875**
- D. ORANGE 2868876**
- E. RED 2868877**



BIG SIZES

SCOUT® OPEN FACE HELMET

FEATURES

Glossy UV lacquer finish
 100% fiberglass outer shell; EPS inner shell
 Fixed lining
 Weight: 1150g
 Safety: DOT certified; ECE certified

ADDITIONAL FEATURES

Detachable sunpeak & cheek pads;
 D ring closure; goggle fastener at back;
 Bluetooth® compatible; Chrome piping

XS-4XL 2868895



RETRO OPEN FACE HELMET SUN PEAK

Only works with the following open face helmets: 2868684, 2868869, 2868870, 2868871, 2868872, 2868897, 2868895, 2869628, 2869633 & 2869629.

ONE SIZE 2868830



BIG SIZES

RETRO OPEN FACE HELMET, WHITE

FEATURES

Glossy UV lacquer finish
 100% fiberglass outer shell; EPS inner shell
 Fixed lining
 Weight: 1150g
 Safety: DOT certified; ECE certified

ADDITIONAL FEATURES

Detachable sunpeak & cheek pads;
 D ring closure; goggle fastener at back;
 Bluetooth® compatible

XS-4XL 2868684



OPEN FACE HELMET SUN PEAK

Only works with the following helmets: 2868681, 2866199 & 2866310.

ONE SIZE 2863849

PINLOCK® 30 FOG RESISTANT INSERT LENS - CLEAR (NOT PICTURED)

ONE SIZE 2867462

INDIAN MOTORCYCLE®
FOOTWEAR





MEN'S MESH SNEAKER

Casual day sneaker. Vibram® sole to provide grip and abrasion resistance. The premium cow leather, antique silver eyelets and breathable mesh panel design make this sneaker a favorite.

FEATURES

- 1.4-1.5mm thick durable cow leather
- Gusset tongue keeps out sand & water
- Antibacterial microfiber insock & mesh lining
- Includes black & red waxy shoe laces

SIZE: 7-13 2868685



MEN'S SNEAKER - BLACK



This sneaker provides a stable fit and protection. The Vibram® sole provides grip and abrasion resistance. The premium cow leather, antique silver eyelets and pinstripe design make this sneaker a favorite for riding and around town.

FEATURES

- 1.4-1.5mm thick durable cow leather
- Gusset tongue keeps out sand & water
- Antibacterial microfiber insock & mesh lining
- Ankle protector, toe cap & heel cup
- Gear shift pad
- Includes black & red waxy shoe laces
- CE certified. Personal Protective Equipment Regulation 2016/425; EN 13634:2017

SIZE: 7-13 2867689



MEN'S CLASSIC MOC - BROWN



This 8-inch lifestyle moccasin boot is developed to provide a stable fit and protection with an ecru Vibram® sole. The premium cow leather, antique brass eyelets and all brown stitching make these boots a favorite for riding and being seen around town.

FEATURES

- 1.4-1.5mm thick durable cow leather
- Gusset tongue & zipper keep out sand & water
- Goodyear welt construction, repairable outsole construction
- Antibacterial microfiber insock & mesh lining
- Ankle protector, toe cap & heel cup
- Gear shift pad
- Includes brown & ecru waxy shoe laces
- CE certified. Personal Protective Equipment Regulation 2016/425; EN 13634:2017

SIZE: 7-13 2867691



NEW

MEN'S SOCKS 2 PACK

Multi pack of branded Indian Motorcycle® socks. Each pack includes two pairs with different graphics. Socks have script logo and contrast stripes.

ONE SIZE (US 7-13) 2869777



MEN'S SOCKS 3 PACK

Multi pack of branded Indian Motorcycle® socks. Each pack includes three colors; black, grey and navy.

ONE SIZE (US 7-13) 2868691



WHAT IS A GOODYEAR WELT?

The Goodyear welting machine, invented in 1869, attaches the sole to a strip of leather, or welt, that runs around the outside of the shoe rather than the lining. Welting is a manual and time-consuming process, but results in a more waterproof and longer lasting shoe.

NEED A REPAIR?

Nu Shoe® is the official cobbler for all Vibram® sole replacements.

www.nushoe.com/indian-boot-repair
Toll free number: 1-877-687-4631



MEN'S ENGINEER - BLACK



This 7.5-inch boot is an iconic short Engineer style with burnish suede back panel. It features an internal YKK® zipper for easy pull-on and a Vibram® sole to provide grip and abrasion resistance. The premium cow leather, original Indian Motorcycle® buckles and all black stitching will have you riding in style.

FEATURES

- 1.4-1.5mm thick durable cow leather
- Strap & elastic gusset to adjust the fitting
- Antibacterial microfiber insock & mesh lining
- Ankle protector, toe cap & heel cup
- Goodyear welt construction
- Repairable outsole construction
- Gusset zipper keeps out sand & water
- CE certified. Personal Protective Equipment Regulation 2016/425; EN 13634:2017

SIZE: 7-13 2867690



MEN'S CLASSIC LACE UP - BLACK



This 8-inch classic lace up boot is developed to provide a stable fit and protection, it has a Vibram® sole to provide grip and abrasion resistance. The premium cow leather, antique silver eyelets and all black stitching make these boots a favorite for riding and being seen around town.

FEATURES

- 1.4-1.5mm thick durable cow leather
- Gusset tongue keeps out sand & water
- Goodyear welt construction
- Repairable outsole construction
- Antibacterial microfiber insock & mesh lining
- Ankle protector, toe cap & heel cup
- Certified slip resistance outsole
- Internal YKK® zipper for easy pull-on
- Includes black & mix combo colored waxy shoe laces
- CE certified. Personal Protective Equipment Regulation 2016/425; EN 13634:2017

SIZE: 7-13 2867688



WOMEN'S SHORT ENGINEER - BLACK



This 8-inch boot is a professional short Engineer style with burnish suede back panel. It features an internal YKK® zipper for easy pull-on. The premium cow leather, original Indian Motorcycle® buckles, embossed logo and all black stitching will have you riding in style.

FEATURES

- 1.4-1.5mm thick durable cow leather
- Strap & elastic gusset to adjust the fitting
- Antibacterial microfiber insock & mesh lining
- Ankle protector, toe cap & heel cup
- Gear shift pad
- Goodyear welt construction
- Repairable outsole construction
- Gusset zipper keeps out sand & water
- CE certified. Personal Protective Equipment Regulation 2016/425; EN 13634:2017

SIZE: 5-11 2867692



WOMEN'S TALL ENGINEER - BROWN

This 13-inch boot is a casual tall Engineer style with burnish suede back panel. It features an internal YKK® zipper an easy opening, with heeled wooden sole and an elastic gusset to adjust the fitting.

FEATURES

- 1.4-1.5mm thick durable cow leather
- Strap & elastic gusset to adjust the fitting
- Antibacterial microfiber insock & mesh lining
- Goodyear welt construction
- Repairable outsole construction
- Gusset zipper keeps out sand & water

SIZE: 5-11 2863964





MEN'S WORTHINGTON BOOT

This boot is based on Red Wing Shoes® classic Engineer style and has been modified for Indian Motorcycle® riders. This 11-inch pull-on boot features plain toe styling, a Vibram® 430 sole to provide higher grip and abrasion resistance and an instep strap to adjust the fitting. The premium Red Wing Shoes® Black Harness leather, original Indian Motorcycle® buckles, embossed logo and all black stitching will have you riding in style. These boots feature Goodyear welt construction and puritan chain stitching.



FEATURES

- 2.0-2.2mm thick durable Red Wing® work boots leather
- Instep strap to adjust the fitting
- Leather Insole
- Traditional Engineer style from 1930s
- Original Indian Motorcycle® logo buckles
- Goodyear welt construction, repairable outsole construction

SIZE: 7-13 2864411



MEN'S SPIRIT LAKE BOOT

This boot is based on Red Wing Shoes® popular Iron Ranger and has been modified for Indian Motorcycle® riders. It is an 8-inch boot developed to provide a stable fit and ankle protection, has a Vibram® 430 sole to provide higher grip and abrasion resistance and features a double layer leather toe cap for protection. The premium Red Wing Shoes® Amber Portage leather, gunmetal eyelets and all brown stitching make these boots a favorite for riding and being seen around town. These boots feature Goodyear welt construction and triple stitched quality.



FEATURES

- 2.0-2.2mm thick durable Red Wing® work boots leather
- Double layer capped toe to protect the toe area
- Gusset tongue to prevent sand or water from getting into the boots
- Leather insole
- Goodyear welt construction, repairable outsole construction

SIZE: 7-13 2864412







FASHION FIT TEES

These tees fit closer to the body than other styles, with a slimmer chest, waist and shoulder, giving a comfortable and sleek silhouette. Reference the size chart on page 5 for more details on the fit.



NEW

FTR FRONT TEE

Celebrate the excitement of the American Flat Track™ by proudly wearing the iconic FTR™ 1200 bike.

Fabric: 100% cotton single jersey
 Graphics: Large hand drawn illustration on front; small hand painted logo on back neck
 Fit: Men's Fashion Fit T-Shirt

S-3XL 2869732



NEW

FTR BIKE SKETCH TEE

Celebrate the excitement of the American Flat Track™ by proudly wearing the iconic FTR™ 1200 bike.

Fabric: 100% cotton single jersey
 Graphics: Large hand drawn illustration on front; small hand painted logo on back neck
 Fit: Men's Fashion Fit T-Shirt

S-3XL 2869731



ADVENTURE TEES

These tees come in a more fashionable fit than our other tees and celebrate the energy of the American Flat Track™.

Fabric: 100% cotton single jersey
 Graphics: Large graphic on front; small hand painted logo on back neck
 Fit: Men's Fashion Fit T-Shirt

S-3XL
ANTIQUE WHITE 2869687
GRAY 2869688



FTR™ 1200 LOGO TEE

Celebrate the excitement and energy of the American Flat Track with this 1200 tee.

Fabric: 100% cotton single jersey
 Graphics: Large logo on front; small print at back neck
 Fit: Men's Fashion Fit T-Shirt

S-3XL
BLACK 2868965
ECRU 2868966



SHIELD 1200 TEES

These simple tees come in a more fashionable fit than our other tees and feature a small printed chest and back neck logo.

Fabric: 100% cotton single jersey
 Graphics: Small shield logo on front; small hand painted logo on back neck
 Fit: Men's Fashion Fit T-Shirt

S-3XL
BLACK 2869690
ANTIQUE WHITE 2869691



HAND PAINTED TEES

These tees come in a more fashionable fit than our other tees and feature an Indian Motorcycle® graphic print across the front, in a hand painted style.

Fabric: 100% cotton single jersey
 Graphics: Large hand painted graphic on front; small hand painted logo on back neck
 Fit: Men's Fashion Fit T-Shirt

S-3XL
NAVY 2869682
RED 2869685



UV RACING TEE

Celebrate the excitement and energy of the American Flat Track™ with this racing style tee. This long sleeved tee uses a bamboo charcoal coating to offer UV protection SPF50, along with thermal control, dry fast, and high wicking properties, to keep you cool and dry on summer rides.

Fabric: 100% polyester
 Graphics: Small FTR™ 1200 logo on chest; large logo on back; logo on left sleeve; thumb holes at cuff

S-3XL 2868970



CHECKERED TEE

This long sleeved black tee features a checkered sleeve with distressed print. The tee has a vintage wash to give it a softer, more relaxed feel.

Fabric: 100% cotton single jersey
 Graphics: Large script logo on front; small logo print on back neck
 Fit: Men's Fashion Fit T-Shirt

S-3XL 2868962



NEW

1901 BONNEVILLE TEE

This antique white tee comes in a more fashionable fit than our other tees. This tee celebrates the record breaking achievement of Burt Munro with a large hand drawn illustration featuring the Scout® Streamliner.

Fabric: 100% cotton single jersey
 Graphics: Large hand drawn illustration on front
 Fit: Men's Fashion Fit T-Shirt

S-3XL 2869746



NEW

1901 SALT FLATS TEE

This port tee comes in a more fashionable fit than our other tees. This tee celebrates the record breaking achievement of Burt Munro at the Bonneville salt flats.

Fabric: 100% cotton single jersey
 Graphics: Large hand drawn illustration on front
 Fit: Men's Fashion Fit T-Shirt

S-3XL 2869747



NEW

1901 MUNRO TEE

This charcoal tee comes in a more fashionable fit than our other tees. This tee celebrates the special record breaking achievement of Burt Munro.

Fabric: 100% cotton single jersey
 Graphics: Large hand drawn illustration on front
 Fit: Men's Fashion Fit T-Shirt

S-3XL 2869748



NEW

WRECKING CREW TEE

Celebrate the talent and winning legacy of the Indian Motorcycle Wrecking Crew™ with this logo tee.

Fabric: 100% cotton single jersey
 Graphics: Large print on chest, back and sleeves

S-3XL 2869743



NEW

MONTAGE TEE

Inspired by the historic evolution of Indian Motorcycle® you can now wear a piece of history with this montage of classic motorcycles.

Fabric: 100% cotton single jersey
 Graphics: Small print on front chest; large print on back; woven patch on right sleeve

S-3XL 2869733



RED MARL TEE

This Indian Motorcycle® short sleeve tee is made in a flattering red marl cotton, a simple tee which features a large Indian Motorcycle® icon print in a soft discharge ink is a classic piece for any Indian Motorcycle® enthusiast.

Fabric: 100% cotton single jersey
 Graphics: Large distressed graphic on front; woven patch on right sleeve

S-3XL 2869657



COLOR HEADADDRESS TEE

Celebrate the Indian Motorcycle® brand with this hand painted, full color headaddress print.

Fabric: 100% cotton single jersey
 Graphics: Large hand painted logo on front; small logo on back neck; woven patch on right sleeve

S-5XL 2869660



ICON LOGO TEE

This fresh, antique white short sleeved tee features a signature Indian Motorcycle® headaddress icon across the chest in a distressed waterbased print.

Fabric: 100% cotton single jersey
 Graphics: Large headaddress logo on front; small logo print on back neck; woven patch on right sleeve

S-5XL 2869661



LOGO TEES

Indian Motorcycle® logo tees are made with 100% pima cotton (excluding gray marl tee) which is a superior cotton. The logos are printed with discharge and water based inks for a soft feel.

Fabric: 100% cotton single jersey
Graphics: Distressed Indian Motorcycle® logo on front; woven patch on right sleeve

S-5XL	
RED	2868807
ANTIQUÉ WHITE	2867945
ECRU (BLACK TEE)	2863317
GRAY MARL <small>FINAL SEASON</small>	2863810



MOTORCYCLE RACING TEE

A black tee featuring a large Indian Motorcycle® racing logo across the back, and a small logo at the front chest.

Fabric: 100% cotton single jersey
Graphics: Small logo print on front; large distressed racing logo print on back; woven label on right sleeve

S-3XL **2867562**



SLEEVELESS QUICK DRY TEE

This tank offers UV protection SPF50, quick dry and high wicking properties to keep you cool and dry on summer rides.

Fabric: 100% polyester
Graphics: Small logo on front & back neck

S-3XL **2869656**



QUICK DRY LOGO TEE

This short sleeved tee offers UV protection SPF50, quick dry and high wicking properties to keep you cool and dry on summer rides.

Fabric: 100% polyester
Graphics: Large logo on front; small logo on back neck

S-3XL **2869665**



CHARCOAL MARL TEE

This tee is made in a soft charcoal marl jersey and features a large front graphic print in a subtle mustard color adding a hint of color to a classic style.

Fabric: 100% cotton single jersey
 Graphics: Large graphic on front; small script logo on neck; woven patch on right sleeve

S-3XL 2869664



LONG SLEEVE LOGO TEE, NAVY

This timeless navy tee proudly displays the Indian Motorcycle® script logo. Printed using an antique white discharge ink for a soft feel.

Fabric: 100% cotton single jersey
 Graphics: Large logo on front; small logo on back neck; "Since 1901" embroidery at back hem; woven patch on right sleeve

S-5XL 2869662



RAGLAN TEE

Made in a soft slub jersey, this contrast raglan sleeve tee in moss gray and charcoal will be a casual staple during the upcoming weather transition months.

Fabric: 100% cotton slub jersey
 Graphics: Large graphic on front small logo print on back neck; woven patch on right sleeve

S-3XL 2869663



LONG SLEEVE LOGO TEE

A classic and simple long sleeve logo tee, in black cotton slub with a large Indian Motorcycle® logo printed on the front in a distressed discharge print, and a small logo at the back neck.

Fabric: 100% cotton slub jersey
 Graphics: Distressed Indian Motorcycle® logo on front & back neck; "1901" embroidery at back hem

S-5XL 2866270



NEW

WRECKING CREW STRIPE SWEAT

Celebrate the talent and winning legacy of the Indian Motorcycle® Wrecking Crew™ with this logo sweat.

Fabric: 100% cotton loopback
 Graphics: Small print on chest; large print on back

S-3XL 2869745



IMC HOODIE

This pullover hoodie is made in a heavy fleece-backed fabric for added warmth. The front features the Indian Motorcycle® logo in applique, while the back features a large embroidered Indian Motorcycle® icon.

Fabric: 70% cotton, 30% polyester fleeceback
 Graphics: Embroidered logo on front & back
 Additional Features: Two hand warmer pockets; drawstring hood; contrasting stitching

S-3XL 2863697



NEW

LOGO HOODIE

This pullover hoodie is made in a heavy, textured grindle brushback fabric for added warmth. Featuring a full color embroidered headdress on the reverse, embroidered Indian Motorcycle® at the front and contrast stitching throughout.

Fabric: 70% cotton, 30% polyester
 Graphics: Embroidered logo on front & back
 Additional Features: Two hand warmer pockets; drawstring hood

S-3XL 2869734



CHECKERED HOODIE

Celebrate the excitement and energy of the American Flat Track™ with this vintage black hoodie featuring a checkered hood lining.

Fabric: 100% cotton terry
 Graphics: Small script logo on front; large embroidered logo on back; print on right sleeve
 Fit: Men's Fashion Fit

S-3XL 2868971



ICON HOODIE

This contrast gray marl and black zip thru hoodie is made in a soft, cotton blend with handwarmer pockets to keep hands cosy, perfect for layering over your favorite tees.

Fabric: 70% cotton, 30% polyester loopback
 Graphics: Small print on front; large print on back
 Additional Features: Two hand warmer pockets with snap closure; drawstring hood

S-3XL 2869666



NEW
CHARCOAL LOGO SWEAT

This classic charcoal marl sweat features the Indian Motorcycle® block logo across the front in a white chainstitching embroidery.

Fabric: 70% cotton, 30% polyester loopback
 Graphics: Large embroidery on front; small embroidery on back neck; "Since 1901" embroidered on back hem; leather patch on right sleeve

S-3XL 2869790



BLOCK LOGO SWEAT

This classic port marl sweat features the Indian Motorcycle® block logo across the front in a white chainstitching embroidery.

Fabric: 70% cotton, 30% polyester loopback
 Graphics: Large embroidery on front; small embroidery on back neck; "Since 1901" embroidered on back hem; leather patch on right sleeve

S-3XL 2869667



FINAL SEASON

IMC CONTRAST ZIP THRU

This contrasting zip-thru comes in light gray and dark gray marl. It features a large applique/embroidery on the back in antique white, and a small embroidery at the front chest. Branded zip pulls are used, along with a leather-look patch at the front hem.

Fabric: 70% cotton, 30% polyester loopback
 Graphics: Small embroidered logo on chest, large embroidered print on back; leather-look patch on front hem; embroidered patch on right sleeve

S-3XL 2867586



GRAY BLACK PLAID SHIRT

This lightweight long sleeve black and gray shirt features an all over woven plaid, twin chest pockets and a button fastening. The plaid shirt is finished with a small embroidered "Since 1901" at the back neck, chest embroidery, and front hem patch.

Fabric: 100% cotton
 Graphics: Leather-look patch at front hem; embroidered logo on front

S-3XL 2868932



BLACK PLAID SHIRT

This heavyweight long sleeve black shirt features an all over woven plaid, chest pocket and a button fastener closure. The plaid shirt features a large embroidered Indian Motorcycle® headdress icon logo on the back and a patch at the front pocket and front hem.

Fabric: 100% brushed cotton
 Graphics: Leather-look patches at front hem & chest pocket; embroidered logo on back; "Since 1901" embroidery at back hem

S-3XL 2868933



NAVY PLAID SHIRT

This soft plaid shirt features two front pockets, embroidered Indian Motorcycle® logo at the back neck and a leather-look patch applied to the front hem. The buttons at the front fastening, pockets, and cuffs are all branded.

Fabric: 100% cotton
 Graphics: Embroidered logo at back neck; embroidered and applique logo on back; two leather-look patches on front; branded buttons

S-3XL 2867586



RED PLAID SHIRT

This soft plaid shirt features two front pockets, embroidered Indian Motorcycle® branding at the back neck and a leather-look patch applied to the front hem. The buttons at the front fastening, pockets, and cuffs are all branded.

Fabric: 100% cotton plaid
 Graphics: Embroidered logo on back and front; leather-look patch on front; branded buttons

S-3XL 2868821



CASUAL SHIRT

Basic black with lots of style points including metal buttons on pockets and epaulets on this pit shirt.

Fabric: 65% polyester, 35% cotton
 Graphics: Embroidered Indian Motorcycle® logo on front & back

S-5XL 2863698



RED BLACK PLAID SHIRT

This lightweight long sleeve black and red shirt features an all over woven plaid, chest pocket and a button fastening. The plaid shirt is finished with a large embroidered Indian Motorcycle® script logo at the back and a patch at the front pocket and front hem.

Fabric: 100% brushed cotton
 Graphics: Leather-look patches at front hem & chest pocket; embroidered logo on back

S-3XL 2868931





NEW

STARLIGHT TEE

Made in a black cotton/modal fabric, this style features a print with applied diamantes for that added sparkle.

Fabric: 50% cotton, 50% modal
Graphics: Large print with rhinestones on front; glitter print on back neck
Fit: Relaxed Fit

XS-3XL 2869751



FINAL SEASON

COLD SHOULDER TEE

Add a twist to a casual wardrobe with this cold shoulder black tee. Made in a cotton/modal mix, this style features an embroidered Indian Motorcycle® headdress logo at the front chest.

Fabric: 50% cotton, 50% modal
Graphics: Large embroidered logo on front; "Since 1901" on back neck
Fit: Relaxed Fit

XS-3XL 2868934



FINAL SEASON

PORT SPARKLE TEE

This tee uses a port color foil print for a subtle all over sparkle. The Indian Motorcycle® logo is printed across the chest in silver glitter print.

Fabric: 65% polyester, 35% rayon
Graphics: Large glitter print logo on front; port foil print speckles across fabric
Fit: Close Fit

XS-3XL 2869671



OPEN BACK TANK

This tank features a split at the center back, low enough to provide modesty. A gold, raised print using the Indian Motorcycle® script logo is placed across the chest.

Fabric: 65% polyester, 35% viscose slub jersey
 Graphics: Large high density logo on front
 Fit: Relaxed Fit

XS-3XL

2869677



NEW

GRADIENT LOGO TEE

This flattering scoop neck tee features the shield Indian Motorcycle® logo.

Fabric: 50% modal, 50% cotton
 Graphics: Large print on front; small print on back
 Fit: Close Fit

XS-3XL

2869709



QUICK DRY TANK

This tank offers UV protection SPF50, quick dry and high wicking properties to keep you cool and dry on summer rides.

Fabric: 100% polyester
 Graphics: Large headdress logo print on front; small logo on back neck
 Fit: Close Fit

XS-3XL

2869679



LOGO RAGLAN TEE

Made in a soft slub jersey, this 3/4 sleeve raglan tee in moss gray and charcoal will be a casual staple during the upcoming weather transition months.

Fabric: 100% cotton slub jersey
 Graphics: Large graphic on front; small logo on back neck; woven patch on right sleeve
 Fit: Relaxed Fit

XS-3XL

2869676



WOMEN'S FTR™ 1200 LOGO TEE

Celebrate the excitement and energy of the American Flat Track™ with this 1200 tee.

Fabric: 100% cotton single jersey
 Graphics: Large print on front; small logo at back neck
 Fit: Close Fit

XS-3XL
ECRU 2868973
BLACK 2868972



IMC MARL TEE

A lightweight gray marl V-neck tee with lace ties at the side seams. An Indian Motorcycle® graphic is printed across the chest in an antique white, Indian Motorcycle® red and charcoal discharge ink.

Fabric: 50% cotton, 50% modal
 Graphics: Large graphic on front
 Fit: Relaxed Fit

XS-3XL 2869669



CONTRAST ICON TEE

A lightweight red marl tee with contrast gray marl sleeves and applied arm stripes in antique white. The Indian Motorcycle® icon is printed on the back in a white water-based print.

Fabric: 100% cotton single jersey
 Graphics: Logo print on front & back; antique white sleeve stripes
 Fit: Close Fit

XS-3XL 2868940



FINAL SEASON

ECRU LOGO V-NECK TEE

This V-neck tee comes in a stretch fabric, and is cut for a close fit to the body. A large distressed Indian Motorcycle® logo is printed across the front.

Fabric: 95% cotton, 5% spandex stretch single jersey
 Graphics: Distressed Indian Motorcycle® logo on the front; patch with graphics on the sleeve
 Fit: Close Fit

S-3XL 2863325



FINAL SEASON

IMC CONTRAST ZIP THRU

This classic gray marl zip-thru with contrast sleeves features a felt applique logo at the back, an embroidered script logo at the front chest and a headdress logo patch at the sleeve. This zip-thru is made in a soft cotton polyester mix and features a stylish collar.

Fabric: 70% cotton, 30% polyester
 Graphics: Embroidered logo on front; embroidered & applique logo on back; woven patch on right sleeve; leather look patch at hem
 Additional Features: Branded buttons & zippers

XS-3XL 2868943



RED PLAID SHIRT

A soft cotton, wardrobe staple with adjustable sleeve that can be worn 3/4 length or full length. This shirt comes in a slim, flattering fit.

Fabric: 100% cotton plaid
 Graphics: Embroidered logo on back
 Additional Features: Branded buttons; faux leather patch on chest pocket
 Fit: Close Fit

XS-3XL 2868805

JUNIORS



LONG SLEEVE BODYSUIT 3 PACK

Your little riders can show their Indian Motorcycle® pride with this Long Sleeve Bodysuit 3 pack. They provide comfortable coverage and feature distinctive Indian Motorcycle® branding.

Fabric: 100% cotton single jersey
Graphics: Printed logo on front & back;
3 pack of navy, red & white

SIZE:	PART #:
3-6 MONTHS/ S	286880102
6-12 MONTHS/ M	286880103
12-18 MONTHS/ L	286880106



SHORT SLEEVE BODYSUIT 3 PACK

Your little riders can show their Indian Motorcycle® pride with this Short Sleeve Bodysuit 3 pack. They come in a lightweight fabric to keep your little one cool and feature distinctive Indian Motorcycle® branding.

Fabric: 100% cotton single jersey
Graphics: Printed logo on front & back;
3 pack of navy, red & white

SIZE:	PART #:
3-6 MONTHS/ S	286880202
6-12 MONTHS/ M	286880203
12-18 MONTHS/ L	286880206



LOGO TEES 2 PACK

Your little riders can show their Indian Motorcycle® pride with this short sleeve tee 2 pack. Featuring distinctive Indian Motorcycle® branding.

Fabric: 100% cotton single jersey
Graphics: Printed logo on front & back;
2 pack of navy & white

SIZE:	PART #:
2-3 YEARS/ XS	286886701
3-4 YEARS/ S	286886702
4-5 YEARS/ M	286886703
5-6 YEARS/ L	286886706

INDIAN MOTORCYCLE® EYEWEAR



IMC GOGGLE



This custom Barstow goggle is a stylish and professional collaboration with 100%, featuring the custom jacquard logo of Indian Motorcycle® on the adjustable strap and etched logo on lens. It is equipped with triple-layer face foam providing excellent moisture management on the move and the gray anti-fog Lexan® lens with integrated pins for seamless tear off application. The upper vents in signature red force air in and channel out moisture to reduce fogging. CE certified; Directive 89/686/EEC. EN 1836:2005+A1:2007 Lens Filter Category 1.

ONE SIZE 2868961



NEW

COSTE GOGGLE



This custom goggle is a stylish and professional collaboration with 100% and artist Dimitri Coste. It is equipped with triplelayer face foam providing excellent moisture management on the move and the gray anti-fog Lexan® lens have integrated pins for seamless tear off application. The upper vents in signature red force air in and channel out moisture to reduce fogging. CE certified; Directive 89/686/EEC. EN 1836:2005+A1:2007 Lens Filter Category 1.

ONE SIZE 2869713



INDIAN MOTORCYCLE® HEADGEAR



NEW

ICON LOGO HAT

Graphics: Woven patch on front
Features: Six panel trucker hat; adjustable leather strap

ONE SIZE 2869761



NEW

CAMO TRUCKER HAT

Graphics: Oil based print
Features: Adjustable plastic closure; mesh back

ONE SIZE v2869703

TRUCKER



SCRIPT ICON TRUCKER HAT

Graphics: Embroidered patch on front
Features: Six panel truck hat; adjustable plastic closure; mesh back; contrast brim

ONE SIZE 2869639

TRUCKER



CHECKERED HAT

Graphics: High density 3D script logo print
Features: Flat skip style with checker print; adjustable plastic closure; mesh back

ONE SIZE 2868959

TRUCKER



BIG SIZES

IMC FLEX FIT HAT

Graphics: Rubber logo on front; woven patch on back
Features: Flat skip style available in two sizes

S/M 286869203
L/XL 286869206



HEADDRESS LOGO HAT

Graphics: Embroidered patch
Features: Adjustable plastic closure; flat skip style; mesh back

ONE SIZE 2867609



BLOCK PATCH HAT

TRUCKER Graphics: Embroidered patch on front
Features: Adjustable plastic closure; mesh back

ONE SIZE 2869641



CIRCLE ICON TRUCKER HAT

TRUCKER Graphics: Embroidered logo
Features: Adjustable plastic closure; mesh back

ONE SIZE 2868694



QUALITY TRUCKER HAT

TRUCKER Graphics: Embroidered patch on front; embroidered "Since 1901" on back
Features: Adjustable plastic closure; mesh back

ONE SIZE 2862313



CIRCLE PATCH HAT

Graphics: Embroidered icon graphic on front; graphic patch on the side
Features: Adjustable strap with metal clasp

ONE SIZE 2863628



BLACK LOGO HAT

Graphics: Embroidered Indian Motorcycle® logo on front; screen printed logo on back
Features: Adjustable Velcro® closure

ONE SIZE 2863727



FTR™ 1200 TRUCKER HAT

TRUCKER Graphics: FTR™ 1200 oil based print
Features: Adjustable plastic closure; mesh back

ONE SIZE 2868958



PORT MARL HAT

TRUCKER Graphics: Oil based print
Features: Adjustable plastic closure; mesh back

ONE SIZE 2869640



BAKER BOY HAT

Graphics: Embroidered logo on back
Features: Baker boy style in wool & polyester herringbone fabric; quilted interior; snap down peak; available in two sizes

S/M 286896003
L/XL 286896006



GRAY ARMY HAT

Graphics: Embroidered logo
Features: Adjustable strap with metal clasp

ONE SIZE 2868945

INDIAN MOTORCYCLE® HEADGEAR



HEADRESS MULTIFUNCTIONAL HEADWEAR

Multifunctional stretchy headwrap with large branding. Wear it in your own style.

Graphics: Tiled logos
Features: Nine reference styles provided

ONE SIZE 2869642



MULTIFUNCTIONAL HEADWEAR

Multifunctional stretchy headwrap with all over logo print. Wear it in your own style.

Graphics: Tiled logos
Features: Nine reference styles provided

ONE SIZE 2865233



NEW

MERINO WOOL SCARF

Unisex lightweight and comfortable scarf made of merino wool. It features knitted in Indian Motorcycle® logo and contrast stripes in signature red and antique white colors. 10.2" (26cm) x 63" (160cm).

Graphics: Indian Motorcycle® Script logo
Features: 100% merino wool

ONE SIZE 2869765



INDIAN MOTORCYCLE® BANDANA

A soft, stylish bandana featuring a repeating pattern of branded graphics on a full-sized bandana that can be worn or used in many ways. 23.6" (60cm) x 23.6" (60cm).

Graphics: Printed script & headdress logos

ONE SIZE 2863846



BE LEGENDARY™ BANDANA

Two way bandana print - fold in half for two different styles as you wish. 23.6" (60cm) x 23.6" (60cm).

Graphics: Tiled script logo & large icon logo

ONE SIZE 2867608



HEADRESS HEAD TIE

Made from cotton with a discharge print. Elasticated rear band for close fit.

Graphics: Printed logos
Features: Elastic band at back

ONE SIZE 2869643



HEAD TIE

This cotton head tie features large branding and an elasticized rear band for a comfortable fit. It also ties in the back.

Graphics: Discharge logo print
Features: Elastic band & tie fasten for adjustability

ONE SIZE 2865234



ICON HEAD WRAP

Embroidered patch logo at front and embroidered stitching at rear. Tie fasten back for close fit.

Graphics: Woven patch on front; embroidered script logo at rear
Features: Tie fasten

ONE SIZE 2867606



HEAD WRAP

All-day comfort and classic rider style. Enhances comfort when worn inside a helmet. There are Indian Motorcycle® logos on the front and back, and an adjustable tie closure at the back.

Graphics: Printed script logo on front; headdress logo on back
Features: Tie fasten

ONE SIZE 2863844



SCRIPT ICON SKULL WRAP

All over script logo print in tonal black. Elastic and tie at rear for a close fit.

Graphics: Felted patch on front; all over tonal black script logo print; embroidered script logo at rear

Features: Tie fasten

ONE SIZE 2867607



NEW

HEADRESS NECK WARMER

This Headdress Neck Warmer, made of fleece shell fabric, provides extra comfort in all conditions. There are Indian Motorcycle® logos on the front and back.

Graphics: Printed script and headdress logos
Features: Toggle adjuster

ONE SIZE 2869764



ICON FLEECE NECK WARMER

Two debossed logos on sides, embroidered logos on front, made of polyester fleece shell fabric and jersey lining with elastic toggle.

Graphics: Embroidered logo, debossed graphics
Features: Toggle adjuster

ONE SIZE 2863998



ICON FLEECE BEANIE

Debossed icon logo at side, embroidered logos on front and back, made of polyester fleece shell fabric and jersey lining.

Graphics: Embroidered logo, debossed graphics

ONE SIZE 2863997



INDIAN MOTORCYCLE®
PET ACCESSORIES





DOG COLLAR

This black leather dog collar is lined with soft, quick dry neoprene for a comfortable fit. Silver reflective, secure buckle with engraved logo and D ring and 5 punch holes. Available in two sizes. Size S/M: 1" (2.5cm) wide x 12.2" - 15.7" (31cm - 40cm) adjustable length. Size L/XL: 1.8" (3.5cm) wide x 16.1" - 19.7" (41cm - 50cm) adjustable length.

S/M 286969503
L/XL 286969506



DOG LEASH

Soft black leather, made to stand up to any active dog and their human. Design features neoprene lined handle for ultimate comfort. Secure chunky antique silver buckle with spring mechanism and embossed branding. 0.8" (2cm) wide x 63" (160cm) tall.

ONE SIZE 2869696



FEEDING BOWL - 2 PACK

Our Indian Motorcycle® stainless steel dog bowl is perfect to feed your hungry pet. Bowls have printed logo, rubber bottom and polished finish for long-lasting beauty. Set includes two sizes: 21oz (610ml) & 32oz (910ml).

21oz. & 32oz. 2869699



SQUEAK BALL - 5 PACK

Keep your pet happy with set of five Indian Motorcycle® Squeak Tennis Balls. Made from a tough tennis ball material with built in squeaker, they float in water making them perfect whatever your surroundings. 2.5" (6.4cm) wide.

2.5" 2869700



CHEW TOY

This branded 100% natural rubber Indian Motorcycle® Chew Toy comes in a great shape for flinging, tugging and chewing. Great for dogs who love the standard bone shape. 2.8" (7cm) wide x 7.1" (18cm) tall.

2.8" x 7.1" 2869701



PULL TOY

Our shaped rubber Indian Motorcycle® tank Pull Toy will provide interactive fun for you and your dog. The rugged ropes will help keep gums and teeth clean and healthy. The tank has star shaped holes on each end so you can stuff your pet with treats. 7.1" (18cm) tall.

7.1" 2869702



FINAL SEASON

WAXED COTTON BACKPACK

This waxed cotton backpack is stylish and large enough to carry everything from a laptop to a rain suit and much more. This backpack features premium heavy-duty waxed cotton canvas with leather trim and adjustable shoulder straps. Additional features include; fleece-lined laptop pocket, magnet closing on pockets and durable brass zippers. Bag dimensions: 19" (48cm) high x 13.3" (34cm) wide x 6.5" (17cm) deep.

ONE SIZE 2868686



FINAL SEASON

WAXED COTTON DUFFLE BAG



This large duffle is durable and designed to carry a wide variety of gear. This bag features premium heavy-duty waxed cotton canvas with leather trim. The large main cargo space closes with a heavy-duty brass zipper. Bag dimensions: 12.5" (32cm) high x 20" (51cm) wide x 9.4" (24cm) deep.

ONE SIZE 2868687

WOMEN'S CROSS BODY BAG

An everyday stylish way to carry small and medium items: keys, wallet, phone, glasses, notebook, and more. This premium leather bag has a debossed Indian Motorcycle® headdress logo on the flap and 100% cotton fabric lining. The flap closes securely with magnetic snap buttons on both edges. The shoulder strap is adjustable and removable. This bag comes with a soft dust bag, perfect for gift giving. Bag dimensions: 11" (28cm) wide x 6.3" (16cm) high x 4.3" (11cm) deep.

ONE SIZE 2869644



FINAL SEASON

WAXED COTTON MESSENGER BAG

This durable messenger bag is large enough to carry most laptops with 15" displays. This bag features premium heavy-duty waxed cotton canvas, and leather trim. Comes with an adjustable shoulder strap, and multiple interior pockets. Fleece-lined laptop compartment. Bag dimensions: 11.8" (30cm) high x 15" (38.5cm) wide x 5.4" (14cm) deep.

ONE SIZE 2868688



FINAL SEASON

WAXED COTTON WASH BAG

A classic wash bag takes on extra style with Indian Motorcycle® branding. This durable waxed cotton canvas bag features embossed leather Indian Motorcycle® branding and branded zipper pull. This bag is lined and roomy enough to carry toiletries or be used to carry other small items. Bag dimensions: 7.5" (19cm) high x 16" (40cm) wide x 6" (15cm) deep.

ONE SIZE 2868690

FINAL SEASON

WAXED COTTON TOTE

This waxed cotton women's tote is a stylish and durable option made of a premium heavy-duty waxed cotton canvas with leather trim and adjustable shoulder straps. Additional features include; internal zip pocket, magnetic closing on pockets and flap, protective zip on main compartment using a durable brass zipper. Bag dimensions: 14" (36cm) high x 18" (4cm) wide x 6" (15cm) deep.

ONE SIZE 2868689



SMALL LEATHER GOODS



WOMEN'S QUILTED PURSE

This women's purse features soft black leather, quilted panels, branded lining and multiple compartments. 3.9" (10cm) high x 7.7" (19.5cm) wide.

ONE SIZE 2868946



TRI-FOLD WALLET, BLACK

This premium black leather Tri-Fold Wallet provides a spacious, efficient, secure, and stylish way to carry valuables. There's a long pocket for currency and several stacked slot pockets in which cards can be stored and remain visible for quick access. Features branded 100% cotton lining and embossed logo. This wallet comes with a branded gift box. 4.3" (11cm) high x 3.7" (9.5cm) wide.

ONE SIZE 2869645



BI-FOLD WALLET, BLACK

This wallet features high quality leather, embossed brand logo and branded lining. 3.7" (9.5cm) high x 4.3" (11cm) wide.

ONE SIZE 2867600



BIKER CHAIN WALLET, BLACK

This wallet features high quality leather, embossed brand logo, branded lining, multiple compartments and a heavy metal chain. 3.7" (9.4cm) high x 7" (17.8cm) wide.

ONE SIZE 2867599



LEATHER FOB KEY CARRIER

Real leather pouch to carry your bike key FOB in style. Embossed lock and unlock detailing at the back so you don't have to remove the key to use. Magnetic snap fastener included. (Key FOB not included.) 5.5cm x 5.5cm.

ONE SIZE 2867558

INDIAN MOTORCYCLE®
MAN CAVE, GARAGE & OUTDOOR





NEW

**INDIAN MOTORCYCLE®
HEADDRESS FRIDGE MAGNETS**

Give your fridge real Indian Motorcycle® style. Set includes two headaddress shaped magnets in different colors. 3.1" (8cm) wide.

SET OF 2 2869772



NEW

**INDIAN MOTORCYCLE®
ICON FRIDGE MAGNETS**

Give your fridge real Indian Motorcycle® style. Set includes two circle magnets with different logos and colors. 2.4" (6cm) wide.

SET OF 2 2869785



NEW

**INDIAN MOTORCYCLE®
SCRIPT FRIDGE MAGNETS**

Give your fridge real Indian Motorcycle® style. Set includes two rectangle magnets in different colors. 3.1" (8cm) wide.

SET OF 2 2869786



2 IN 1 HEADDRESS STOPPER

Enjoy wine without the troubles of too many gadgets laying around. This 2-in-1 Headdress Corkscrew and Wine Stopper will serve all your needs. Keep it at home or carry on road trips. 3.1" (7.8cm) x 5.1" (13cm).

3.1" x 5.1" 2869652



**INDIAN MOTORCYCLE® BADGE LOGO
BOTTLE OPENER**

Pop tops in style with this premium metal Bottle Opener. It features a stylish design, efficient bottle opener, and red and silver Indian Motorcycle® logo. 2.4" (6cm) wide x 3.3" (8.5cm) tall.

2.4" x 3.3" 2863852



INDIAN MOTORCYCLE® SLAP KOOZIE

Keep your beverage cool and your hands warm with the Indian Motorcycle® slap koozie. 9" (23cm) wide x 3.1" (8cm) tall.

ONE SIZE 2863959



NEW

ICON COASTERS

Enjoy your beverage while protecting your table or bar with Indian Motorcycle® rubber coasters. Diameter: 3.5" (9cm).

SET OF 6 2869773



WALL CLOCK

Brighten your man cave with the glow of the Indian Motorcycle® Wall Clock. This gloss black framed wall clock features a speedometer graphic which delivers precise and accurate time. Diameter: 11.8" (30cm). Depth: 2" (5cm).

11.8" DIA. 2869651



INDIAN MOTORCYCLE® MAN CAVE, GARAGE & OUTDOOR



HOME RUG

Featuring the icon and headdress logos, this home rug will complete the total look of your man cave.
Size: 116.2" (295cm) x 76.8" (195cm).

116.2" x 76.8" 2864417



WOOL THROW

This high quality, hardy and timeless woollen throw with iconic headdress logo will provide you with the comfort and warmth you need. Machine washable. Made in USA.
Size: 80" (203cm) x 50" (127cm).



80" x 50" 2864414



NEW

DOOR MAT

Featuring the Indian Motorcycle® icon logo, this door mat will complete the look of your man cave or home. Size: 35.4" (90cm) x 23.6" (60cm).

35.4" x 23.6" 2869779



LOGO BIKE MAT

This heavy-duty garage mat to parked your bike on or kneel on while doing maintenance. Mat is 103.9" (264cm) x 52.4" (133cm).

103.9" x 52.4" 2863879



HEADDRESS TOWEL

Featuring the headdress and script logos, this oversized towel will provide you with the comfort you need.
Size: 61.8" (157cm) x 31.5" (80 cm).

61.8" x 31.5" 2869650



NEW

CIRCLE WOODEN SIGN

This barrel sign will be an iconic piece in your bar. Made of 100% pine wood. Diameter: 15.7" (40cm).

15.7" DIA. 2869766



NEW

CORRUGATED SIGN

This corrugated metal sign will be an iconic piece in your collection. UV & rust resistant. Suitable for indoor and outdoor. 15.7" (40cm) wide x 11.8" (30cm) tall.

15.7" x 11.8" 2869767

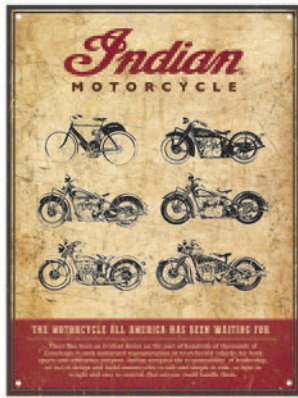


NEW

LEGEND LIVES SIGN

Expand your collection with this beautiful Legend Lives metal sign featuring an embossed headdress logo. 15.7" (40cm) wide x 11.8" (30cm) tall.

15.7" x 11.8" 2869768



NEW

MONTAGE SIGN

Own a piece of historic Indian Motorcycle® marketing drawing with this antique metal sign. 11.8" (30cm) wide x 15.7" (40cm) tall.

15.7" x 11.8" 2869769



RACER SIGN

Add this beautiful Racer Sign to your metal sign collection. Features Indian Motorcycle® Flat Track Racing. 13.4" (34.1cm) wide x 13.4" (34.1cm) tall.

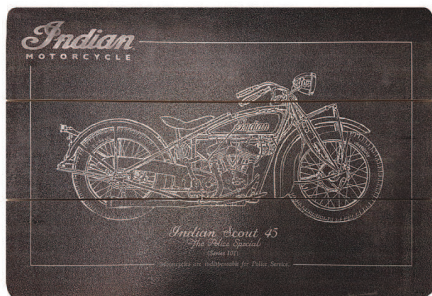
13.4" x 13.4" 2868949



CIRCLE BOMBER GIRL METAL SIGN

Vintage inspired, this is an iconic sign with the retro styled pin-up girl. 12" (30.5cm) diameter.

12" DIA. 2868947



WOODEN CHALK SIGN

Own a piece of history with this Indian Motorcycle® marketing sketch wooden sign with chalk print effect. 15.7" (40cm) wide x 10.8" (27.5cm) tall.

15.7" x 10.8" 2868948



GENUINE PARTS & ACCESSORIES SIGN

Add this Genuine Parts & Accessories metal sign featuring the embossed headdress logo into your collection. 15.7" (40cm) wide x 11.8" (30cm) tall.

15.7" x 11.8" 2864421



FIRST MOTORCYCLE SIGN

Vintage inspired, this is an iconic sign with embossed effect on the logo. 15.7" (40cm) wide x 11.8" (30cm) tall.

15.7" x 11.8" 2864420

INDIAN MOTORCYCLE® GIFTS & COLLECTIBLES



NEW

BLACK LEATHER BELT

This belt in black vintage leather delivers outstanding versatility and has embossed Indian Motorcycle® logo.

S-2XL

2869776



NEW

ICON BELT BUCKLE

This metal buckle features a multi-colored icon logo with matte silver finish. Ready to use on any leather belt (not included). 3.6" (9.8cm) wide.

3.6" WIDE

2869712



NEW

HEADDRESS BELT BUCKLE

This high quality metal buckle features an Indian Motorcycle® embossed headdress logo and is ready to use on any leather belt (not included). 3.6" (9.8cm) wide.

3.6" WIDE

2869711



MEN'S CIRCLE BUCKLE

This premium brass Circle Buckle features a multi-colored, enamel Indian Motorcycle® logo, and is ready for use with any leather belt (not included). Buckle diameter is 3.3" (8.5cm).

3.3" WIDE

2863822



INDIAN SPORT SCOUT® 1:12 SCALE

Display the Indian® Sport Scout® as a great conversation starter or reminder of the early days. Perfect for your desk or mantle.

1:12 SCALE

2863683



KEY FOB, METAL

This handsome 100% metal alloy headdress logo key fob has a bottle opener and key ring. 3.1" (8cm) wide.

3.1" WIDE

2863336



NEW

FTR™ 1200 RUBBER KEY RING

This graphic rubber key ring features the FTR™ 1200 bike. Made with specialized machinery for defined cut out details. 5.9" (15cm) wide x 2.2" (5.5cm) tall.

5.9" x 2.2"

2869775



ICON RUBBER KEY RING

Icon logo rubber key ring. Made with specialized machinery for defined cut out details on logo. Diameter: 1.8" (4.5cm)

1.8"

2869649



HEADRESS RUBBER KEY RING

Iconic headdress rubber key ring. Made with specialized machinery for defined cut out details on logo. 1.2" (3cm) wide x 4.7" (12cm) tall.

1.2" x 4.7"

2863982



NEW

ICON LEATHER KEY RING

Quality key ring featuring the icon logo in metal. Made with a special leather work technique. 2.2" (5.5cm) wide x 3.9" (10cm) tall.

2.2" x 3.9"

2869774



ICON LEATHER KEY RING

Quality key ring featuring the embossed icon logo on both sides. Made with a special leather work technique. 2.2" (5.5cm) wide x 3.5" (9cm) tall.

2.2" x 3.5"

2863965



SCRIPT LEATHER KEY RING

Keep your keys safe with this modern key ring with script logo embossed on both sides. 1.2" (3cm) wide x 4.7" (12cm) tall.

1.2" x 4.7"

2863926



NEW

CHRISTMAS BAUBLES

Trim your tree with this beautiful set of six Indian Motorcycle® Christmas baubles with printed headdress logos on both sides. Diameter: 3.1" (8cm)

SET OF 6

2869770



NEW

HOLIDAY STOCKING

This set of two Indian Motorcycle® holiday stockings is loaded with holiday spirit. Set includes two different colors with repeating pattern of branded logos. Made of 100% cotton with sherpa top.

SET OF 2

2869771



INDIAN MOTORCYCLE® GIFTS & COLLECTIBLES



NEW
SCOUT® PIN

1.77cm WIDE 2869780



NEW
CHIEF® CLASSIC PIN

1.77cm WIDE 2869782



NEW
SCOUT® SIXTY PIN

1.77cm WIDE 2869781



NEW
ROADMASTER® PIN

1.77cm WIDE 2869783



INDIAN MOTORCYCLE®
LOGO PIN

1.2" WIDE 2863673



INDIAN MOTORCYCLE®
CIRCLE ICON PIN

1" WIDE 2863674



INDIAN MOTORCYCLE®
HEADDRESS PINS

1.6" WIDE
BROWN 2863676
COLORED 2863675



NEW
FTR™ 1200 STICKER SET

This sticker set contains an assortment of full-color FTR™ 1200 logos. Not suitable for motorcycle bodywork. 13.25" (34cm) high x 8.5" (22cm) wide.

13.25" x 8.5" 2869778



INDIAN MOTORCYCLE® STICKER SET

Add branding to nearly any surface. Not suitable for motorcycle bodywork. 13.25" (34cm) high x 8.5" (22cm) wide.

13.25" x 8.5" 2863865



LOGO PATCH

4.3" WIDE 2863861



COLORED HEADDRESS PATCH

4.5" WIDE 2863864



CIRCLE ICON PATCH

3.1" WIDE 2863862

PARTS BAG (NOT PICTURED)

M: 15.5" (40cm) w x 17.5" (45cm) h
L: 27.5" (70cm) w x 19.5" (50cm) h
Order in multiples of 10.

MEDIUM 2863991

LARGE 2863994

CASUALWEAR HANGER

(NOT PICTURED)

Order in multiples of 10.

ONE 2863397

INDIAN MOTORCYCLE® POLISHES



NO RINSE WASH & SHINE

This environmentally friendly product offers a fast, convenient way to wash a motorcycle with absolutely no rinsing. Simply add 1 ounce to a 2 gallon bucket of water, soak an Indian® Microfiber Towel in the bucket and wash a section at a time. This unique formula encapsulates the dirt, lifting it away from the surface allowing you to finish by simply drying with a clean Indian® Microfiber Towel. No streaks, smears or scratches.

SIZE: 16 OZ/ 12PK
PART #: 2863892



INSTANT DETAILER & SHINE

Detail in minutes with Instant Detailer and Shine. Spray it on a microfiber towel or directly on the bike to remove dirt and bugs. Use on windshields, bodywork and chrome. Safe for use on plexiglas, lexan®, acrylic, or factory coated windshields.

SIZE: 16 OZ/ 12PK
PART #: 2863893



ENGINE ENHANCER

Engine Enhancer is specially designed to preserve and restore the beauty of an engine and related parts. It provides a durable, factory finish without greasy or oily residue.

SIZE: 16 OZ/ 12PK
PART #: 2863894



WHITE WALL & WHEEL CLEANER

This non-corrosive cleaner will safely dissolve and remove grease, oil, road dirt, and brake dust from motorcycle tires and wheels. It is excellent for use on white wall tires, and is a biodegradable cleaner that is safe for all wheels, such as chrome, aluminum, clear or powder-coated wheels.

SIZE: 16 OZ/ 12PK
PART #: 2863895



SPRAY WAX & PROTECTANT

Spray Wax and Protectant can be used on any clean surface, wet or dry, and it will produce a durable, high-gloss shine with minimal effort. It contains no petroleum distillates or silicone.

SIZE: 16 OZ/ 12PK
PART #: 2863896



SUPER PLUSH M/F TOWEL-TWIN PACK

The only towels a rider should use on a motorcycle, these 100% microfiber towels won't scratch any surface. They are extremely plush, can be used with chemicals and cleaners, and are machine washable. Sold in packs of two towels.

SIZE: TWIN PK/ 24PK
PART #: 2863897



TRAVEL PACK

A rider can keep an Indian Motorcycle® looking great while traveling by carrying this Travel Pack. It includes 4 oz. bottles of Bike Wash Concentrate, Spray & Wipe Instant Detailer, Liquid Spray Wax, and Leather, Vinyl & Rubber Conditioner, plus a plush microfiber towel.

SIZE: 12PK
PART #: 2863898



