



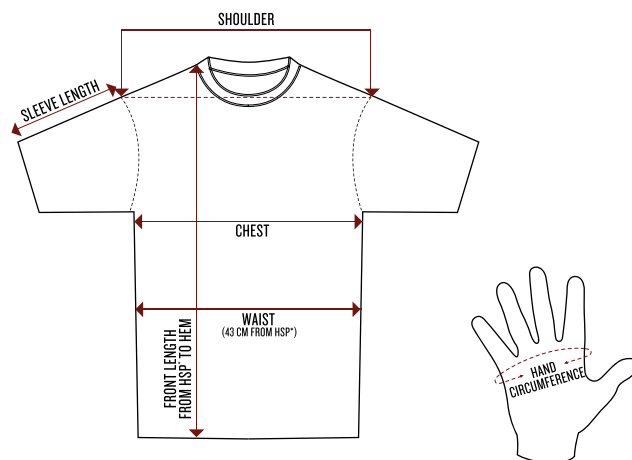
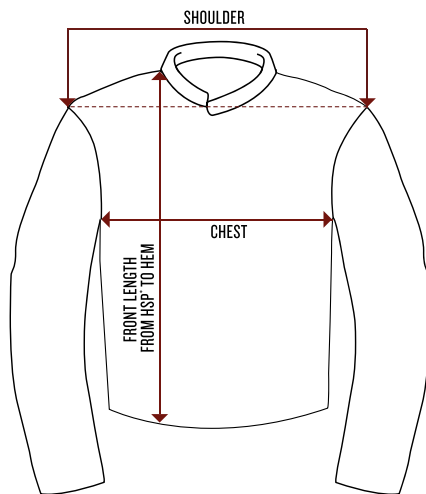
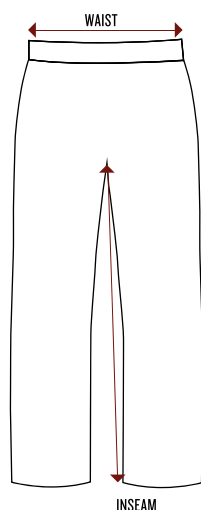
*Indian*  
MOTORCYCLE

# APPAREL & GIFTS

DEALER CATALOG

2020

# APPAREL SIZE CHARTS



MEN'S V-TWIN FIT JACKETS												
	CHEST		SHOULDER		RIDE LEATHER FRONT LENGTH FROM HSP'		RIDE TEXTILE FRONT LENGTH FROM HSP'		MESH FRONT LENGTH FROM HSP'		RIDE CASUAL FRONT LENGTH FROM HSP'	
SIZE	IN	CM	IN	CM	IN	CM	IN	CM	IN	CM	IN	CM
XS	40.2 - 41.7	102 - 106	20.1	51	25.2	64	25.6	65	25.6	65	25.6	65
S	43.3 - 44.9	110 - 114	20.5	52	25.6	65	26.0	66	26.0	66	26.0	66
M	46.5 - 48	118 - 122	20.9	53	26.0	66	26.4	67	26.4	67	26.4	67
L	49.6 - 51.2	126 - 130	21.3	54	26.4	67	26.8	68	26.8	68	26.8	68
XL	53.5 - 55.1	136 - 140	22.0	56	27.2	69	27.6	70	27.6	70	27.6	70
XL-TALL	53.5 - 55.1	136 - 140	22.0	56	28.7	73	/	/	29.1	74	29.1	74
2XL	57.5 - 59	146 - 150	22.8	58	28.0	71	28.3	72	28.3	72	28.3	72
2XL-TALL	57.5 - 59	146 - 150	22.8	58	29.5	75	/	/	29.9	76	29.9	76
3XL	61.4 - 63	156 - 160	23.6	60	28.7	73	29.1	74	29.1	74	29.1	74
3XL-TALL	61.4 - 63	156 - 160	23.6	60	30.3	77	/	/	30.7	78	30.7	78
4XL	65.4 - 66.9	166 - 170	24.4	62	29.5	75	29.9	76	29.9	76	29.9	76
5XL	69.3 - 70.9	176 - 180	25.2	64	30.3	77	30.7	78	30.7	78	30.7	78

MEN'S V-TWIN FIT VESTS							
SIZE	CHEST		SHOULDER		FRONT LENGTH FROM HSP		
	IN	CM	IN	CM	IN	CM	
XS	39 - 40.2	99 - 102	17.7	45	27.0	68.5	
S	42.1 - 43.3	107 - 110	18.1	46	27.4	69.5	
M	45.3 - 46.5	115 - 118	18.5	47	27.8	70.5	
L	48.4 - 49.6	123 - 126	18.9	48	28.1	71.5	
XL	52.4 - 53.5	133 - 136	19.7	50	28.9	73.5	
2XL	56.3 - 57.5	143 - 146	20.5	52	29.7	75.5	
3XL	60.2 - 61.4	153 - 156	21.3	54	30.5	77.5	
4XL	64.2 - 65.4	163 - 166	22.0	56	31.3	79.5	
5XL	68.1 - 69.3	173 - 176	22.8	58	40.0	101.5	

MEN'S RELAXED FIT JACKETS						
SIZE	CHEST		SHOULDER		FRONT LENGTH FROM HSP*	
	IN	CM	IN	CM	IN	CM
S	50	127	20.4	51.8	24.5	62
M	52.5	133.3	21	53.3	25	63.5
L	58	147.3	22	55.9	26	65.5
XL	62.5	158.8	23	58.4	26.5	67
2XL	66	167.6	24	61	27	69
3XL	68	172.7	24.5	62.2	27.5	70

Relaxed fit is wider in the shoulder, body and sleeve and shorter in body length than the V-Twin fit.

MEN'S CHAPS					
SIZE	WAIST		INSEAM		
	IN	CM	IN	CM	
M	35	89	33	84.5	
L	38	97	33	84.5	
XL	41	105	33	84.5	
2XL	44.5	113	33	84.5	
3XL	47.5	121	33	84.5	
4XL	51	129	33	84.5	
5XL	54	137	33	84.5	

RAINSUIT- JACKET						
SIZE	CHEST		SHOULDER		FRONT LENGTH FROM HSP*	
	IN	CM	IN	CM	IN	CM
XS	44.9	114	21.3	54	27.0	68.5
S	48.0	122	21.7	55	27.4	69.5
M	51.2	130	22.0	56	27.8	70.5
L	54.3	138	22.4	57	28.1	71.5
XL	58.3	148	23.2	59	28.9	73.5
2XL	62.2	158	24.0	61	29.7	75.5
3XL	66.1	168	24.8	63	30.5	77.5
4XL	70.1	178	25.6	65	31.3	79.5
5XL	74.0	188	26.4	67	32.1	81.5

RAINSUIT- PANTS				
SIZE	WAIST (RELAXED)		INSEAM	
	IN	CM	IN	CM
XS	33.1	84	31.9	81
S	34.6	88	32.3	82
M	36.2	92	32.7	83
L	39.4	100	33.3	84.5
XL	42.5	108	33.9	86
2XL	45.7	116	34.4	87.5
3XL	48.8	124	35.0	89
4XL	52.0	132	35.6	90.5
5XL	55.1	140	36.2	92

WOMEN'S V-TWIN FIT JACKETS												
	CHEST		SHOULDER		RIDE LEATHER FRONT LENGTH FROM HSP'		RIDE MESH FRONT LENGTH FROM HSP'		LEATHER CASUAL FRONT LENGTH FROM HSP'		TEXTILE CASUAL FRONT LENGTH FROM HSP'	
SIZE	IN	CM	IN	CM	IN	CM	IN	CM	IN	CM	IN	CM
XS	37.0	94	16.5	42	24.0	61	25.8	65.5	22.4	57	24.4	62
S	39.4	100	16.9	43	24.8	63	26.6	67.5	23.2	59	25.2	64
M	41.7	106	17.3	44	25.6	65	27.4	69.5	24.0	61	26.0	66
L	44.1	112	17.7	45	26.4	67	28.1	71.5	24.8	63	26.8	68
XL	47.2	120	18.5	47	27.2	69	28.9	73.5	25.6	65	27.6	70
2XL	50.4	128	19.3	49	28.0	71	29.7	75.5	26.4	67	28.3	72
3XL	53.5	136	20.1	51	28.7	73	30.5	77.5	27.2	69	29.1	74

WOMEN'S V-TWIN FIT VESTS						
SIZE	CHEST		SHOULDER		FRONT LENGTH FROM HSP*	
	IN	CM	IN	CM	IN	CM
XS	34.6	88	10.8	27.5	21.3	54
S	37.0	94	11.4	29	22.0	56
M	39.4	100	12.0	30.5	22.8	58
L	41.7	106	12.6	32	23.6	60
XL	44.9	114	13.4	34	24.4	62
2XL	48.0	122	14.2	36	25.2	64
3XL	51.2	130	15.0	38	26.0	66
1W	69.7	177	12.6	32	24.4	62
2W	49.2	125	13.4	34	25.2	64
3W	52.4	133	14.2	36	26.0	66

WOMEN'S CHAPS				
SIZE	WAIST		INSEAM	
	IN	CM	IN	CM
S	35.5	90	33	83.5
M	37	94	33	83.5
L	40	102	33	83.5
XL	43	110	33	83.5
2XL	46.5	118	33	83.5
3XL	50	126	33	83.5
4XL	53	134	33	83.5
5XL	56	142	33	83.5

PART NUMBER SIZE GUIDE- APPAREL**																
SIZE	XS	S	M	L	LT	XL	XL'T	2XL	2XL'T	3XL	3XL'T	4XL	5XL	1W	2W	3W
PART #	01	02	03	06	08	09	11	12	13	14	20	15	16	17	18	19

\*\*Based on the size you are ordering, add the above number to the end of the item's part number. LT, XL'T, 2XL'T, 3XL'T are tall sizes.

PART NUMBER SIZE GUIDE- FOOTWEAR**												
SIZE	05	06	07	08	09	10	11	12	13			
PART #	05	06	07	08	09	10	11	12	13			

\*\*Based on the size you are ordering, add the above number to the end of the item's part number.

MEN'S TEES								
	CHEST		SHOULDER		FRONT LENGTH FROM HSP*		SLEEVE LENGTH	
SIZE	IN	CM	IN	CM	IN	CM	IN	CM
S	18.5	47	17.3	44	28.0	71	7.5	19
M	20.5	52	18.9	48	28.7	73	8.3	21
L	22.4	57	20.5	52	29.5	75	9.1	23
XL	24.4	62	22.0	56	30.3	77	9.8	25
2XL	26.4	67	23.6	60	31.1	79	10.6	27
3XL	28.3	72	25.2	64	31.9	81	11.4	29
4XL	31.3	79.5	27.6	70	33.1	84	12.6	32
5XL	34.3	87	29.9	76	34.3	87	13.8	35

MEN'S FASHION FIT TEES								
	CHEST		SHOULDER		FRONT LENGTH FROM HSP*		SLEEVE LENGTH	
SIZE	IN	CM	IN	CM	IN	CM	IN	CM
S	18.5	47	17.5	44.5	28.3	72	6.7	17
M	20.5	52	19.1	48.5	29.1	74	7.5	19
L	22.4	57	20.7	52.5	29.9	76	8.3	21
XL	24.4	62	22.2	56.5	30.7	78	9.1	23
2XL	26.4	67	23.8	60.5	31.5	80	9.8	25
3XL	28.3	72	25.4	64.5	32.3	82	10.6	27

## FASHION FIT TEES

A close fit made in a lighter weight jersey, giving a comfortable and sleek silhouette.

MEN'S SLEEVELESS TEES						
	CHEST		SHOULDER		FRONT LENGTH FROM HSP*	
SIZE	IN	CM	IN	CM	IN	CM
S	18.5	47	16.1	41	28.0	71
M	20.5	52	17.7	45	28.7	73
L	22.4	57	19.3	49	29.5	75
XL	24.4	62	20.9	53	30.3	77
2XL	26.4	67	22.4	57	31.1	79
3XL	28.3	72	24.0	61	31.9	81
4XL	31.3	79.5	26.4	67	33.1	84
5XL	34.3	87	28.7	73	34.3	87

MEN'S HOODIES & SWEATS						
	CHEST		SHOULDER		FRONT LENGTH FROM HSP*	
SIZE	IN	CM	IN	CM	IN	CM
S	20.1	51	18.1	46	26.8	68
M	22.0	56	19.7	50	27.6	70
L	24.0	61	21.3	54	28.3	72
XL	26.0	66	22.8	58	29.1	74
2XL	28.0	71	24.4	62	29.9	76
3XL	29.9	76	26.0	66	30.7	78
4XL	32.9	83.5	28.3	72	31.9	81
5XL	35.8	91	30.7	78	33.1	84

MEN'S SHIRTS						
	CHEST		SHOULDER		FRONT LENGTH FROM HSP*	
SIZE	IN	CM	IN	CM	IN	CM
S	20.1	51	18.1	46	29.9	76
M	22.0	56	19.7	50	30.7	78
L	24.0	61	21.3	54	31.5	80
XL	26.0	66	22.8	58	32.3	82
2XL	28.0	71	24.4	62	33.1	84
3XL	29.9	76	26.0	66	33.9	86
4XL	32.9	83.5	28.3	72	35.0	89
5XL	35.8	91	30.7	78	36.2	92

WOMEN'S TEES- CLOSE FIT (STRETCH FABRIC)								
	CHEST		WAIST		SHOULDER		FRONT LENGTH FROM HSP*	
SIZE	IN	CM	IN	CM	IN	CM	IN	CM
XS	15.4	39	13.4	34	15.0	38	25.6	65
S	16.5	42	14.6	37	15.6	39.5	26.0	66
M	17.7	45	15.7	40	16.1	41	26.4	67
L	18.9	48	16.9	43	16.7	42.5	26.8	68
XL	20.5	52	18.5	47	17.5	44.5	27.2	69
2XL	22.0	56	20.1	51	18.3	46.5	27.6	70
3XL	23.6	60	21.7	55	19.1	48.5	28.0	71

WOMEN'S TEES- RELAXED FIT								
	CHEST		WAIST		SHOULDER		FRONT LENGTH FROM HSP*	
SIZE	IN	CM	IN	CM	IN	CM	IN	CM
XS	16.9	43	15.2	38.5	15.4	39	24.8	63
S	18.1	46	16.3	41.5	15.9	40.5	25.2	64
M	19.3	49	17.5	44.5	16.5	42	25.6	65
L	20.5	52	18.7	47.5	17.1	43.5	26.0	66
XL	22.0	56	20.3	51.5	17.9	45.5	26.4	67
2XL	23.6	60	21.9	55.5	18.7	47.5	26.8	68
3XL	25.2	64	23.4	59.5	19.5	49.5	27.2	69

WOMEN'S TANKS- CLOSE FIT					
	CHEST		WAIST		FRONT LENGTH FROM HSP*
SIZE	IN	CM	IN	CM	IN
XS	15.4	39	13.4	34	25.2
S	16.5	42	14.6	37	25.6
M	17.7	45	15.7	40	26.0
L	18.9	48	16.9	43	26.4
XL	20.5	52	18.5	47	26.8
2XL	22.0	56	20.1	51	27.2
3XL	23.6	60	21.7	55	27.6

WOMEN'S TANKS- RELAXED FIT					
	CHEST		WAIST		FRONT LENGTH FROM HSP*
SIZE	IN	CM	IN	CM	IN
XS	16.9	43	15.2	38.5	24.0
S	18.1	46	16.3	41.5	24.4
M	19.3	49	17.5	44.5	24.8
L	20.5	52	18.7	47.5	25.2
XL	22.0	56	20.3	51.5	25.6
2XL	23.6	60	21.9	55.5	26.0
3XL	25.2	64	23.4	59.5	26.4

WOMEN'S HOODIES & SWEATS							
	CHEST		WAIST		SHOULDER		FRONT LENGTH FROM HSP*
SIZE	IN	CM	IN	CM	IN	CM	IN
XS	19.3	49	17.7	45	17.5	44.5	24.8
S	20.5	52	18.9	48	18.1	46	25.2
M	21.7	55	20.1	51	18.7	47.5	25.6
L	22.8	58	21.3	54	19.3	49	26.0
XL	24.4	62	22.8	58	20.1	51	26.4
2XL	26.0	66	24.4	62	20.9	53	26.8
3XL	27.6	70	26.0	66	21.7	55	27.2

WOMEN'S SHIRTS							
	CHEST		WAIST		SHOULDER		FRONT LENGTH FROM HSP*
SIZE	IN	CM	IN	CM	IN	CM	IN
XS	17.3	44	16.1	41	15.4	39	25.0
S	18.5	47	17.3	44	15.9	40.5	25.4
M	19.7	50	18.5	47	16.5	42	25.8
L	20.9	53	19.7	50	17.1	43.5	26.2
XL	22.4	57	21.3	54	17.9	45.5	26.6
2XL	24.0	61	22.8	58	18.7	47.5	27.0
3XL	25.6	65	24.4	62	19.5	49.5	27.4

MEN'S GLOVES		
HAND CIRCUMFERENCE		
SIZE	IN	CM
S	8.1	20.65
M	8.4	21.45
L	8.8	22.25
XL	9.1	23.05
2XL	9.4	23.85
3XL	9.7	24.65
4XL	10	25.45

WOMEN'S GLOVES		
HAND CIRCUMFERENCE		
SIZE	IN	CM
S	7.2	18.3
M	7.5	19.1
L	7.8	19.9
XL	8.2	20.7

MEN'S FOOTWEAR				
USA	EU	UK	IN	CM
7	39	6	9.8	25
8	41	7	10.2	26
9	42	8	10.6	27
10	43	9	11	28
11	44.5	10	11.4	29
12	46	11	11.8	30
13	47	12	12.2	31

WOMEN'S FOOTWEAR				
USA	EU	UK	IN	CM
5	35	2.5	8.7	22
6	36	3.5	9	23
7	37.5	4.5	9.4	24
8	38.5	5.5	9.8	25
9	40	6.5	10.2	26
10	41.5	7.5	10.6	27
11	42.5	8.5	11	28

HELMETS			
SIZE	HAT SIZE	IN	CM
XS	6 <sup>3</sup> / <sub>4</sub>	21.3	54
S	6 <sup>7</sup> / <sub>8</sub> - 7	21.7 - 22	55 - 56
M	7 <sup>1</sup> / <sub>8</sub> - 7 <sup>1</sup> / <sub>4</sub>	22.4 - 22.8	57 - 58
L	7 <sup>3</sup> / <sub>8</sub> - 7 <sup>1</sup> / <sub>2</sub>	23.2 - 23.6	59 - 60
XL	7 <sup>5</sup> / <sub>8</sub> - 7 <sup>3</sup> / <sub>4</sub>	24 - 24.4	61 - 62
2XL	7 <sup>7</sup> / <sub>8</sub> - 8	24.8 - 25.2	63 - 64
3XL	8 <sup>1</sup> / <sub>8</sub> - 8 <sup>1</sup> / <sub>4</sub>	25.6 - 26	65 - 66
4XL	8 <sup>3</sup> / <sub>8</sub> - 8 <sup>1</sup> / <sub>2</sub>	26.4 - 26.8	67 - 68

BELTS		
SIZE	IN	CM
S	30 - 34	76 - 86
M	34 - 38	86 - 96
L	38 - 42	96 - 106
XL	42 - 46	106 - 116
2XL	46 - 50	116 - 126









NEW

ETA MARCH

HERITAGE

## GETAWAY JACKET, BROWN

CE

A modern classic brown leather riding jacket. Ventilation zips on sleeves and back to keep cool in warmer temperatures. This jacket has protectors that are lightweight, slim, very flexible and highly protective, making them feel invisible when worn. Contrast suede and embroidery Indian Motorcycle® branding on back body panel.

VENTED

## FEATURES

0.9-1.0mm leather shell  
Fixed lining  
Removable liner- quilted vest  
4 exterior & 1 interior pocket  
Snap cuffs  
V-Twin Fit  
CE certified; EU Regulation 2016/425  
FprEN 17092-4:2019

## ADDITIONAL FEATURES

Removable slim, lightweight & flexible protectors to shoulders & elbows (EN1621-1:2012)

XS-3XL

2860501

LARGE SIZES

HERITAGE

## CLASSIC JACKET 2, BROWN

CE

AVAILABLE FOR DELIVERY NOW

A true Indian Motorcycle® classic. This timeless style jacket features a slightly worn dark brown leather. Snap down collar stops any flapping when riding. The jacket also features a removable quilted plaid liner for cooler days.

## FEATURES

1.2-1.4mm thick leather shell  
Fixed lining- plaid  
Removable liner- quilted plaid vest  
2 exterior, 1 chest & 1 interior pocket  
Zippered side expansion panels; snap wrist adjustment tabs  
V-Twin Fit  
CE certified; Directive 89/686/CE V06.  
French Protocol Level 1

## ADDITIONAL FEATURES

Removable CE protectors in shoulders & elbows; snap down collar; antique brass zippers; embroidered script logo on front left; applique/embroidered script logo on back; circle headaddress patch on right sleeve



S-5XL

2867669

HERITAGE

## FLAT TRACK JACKET, BLACK

CE

AVAILABLE FOR DELIVERY NOW

A racing inspired jacket featuring colored panels and a removable quilted liner to keep the wearer warm and dry.

VENTED

## FEATURES

Fixed lining- airmesh  
Removable liner- quilted vest  
2 exterior & 1 interior pocket  
Snap cuffs  
V-Twin Fit  
CE certified; EU Regulation 2016/425  
prEN 17092-4:2018

## ADDITIONAL FEATURES

Removable CE protectors in shoulders & elbows (EN 1621-1:2012); action back; snap down collar; contrast stripe detailing across sleeves; adjustable side tabs; embroidered & applique branding on front; American flag patch on left sleeve, Motor Oil patch on right sleeve



XS-3XL

2869638



**LARGE SIZES**

**OUTSIDER VEST, BLACK**

AVAILABLE FOR DELIVERY NOW

This black leather vest is a modern classic. It features secure chest pockets with flaps and zip adjustable sides.

**CASUAL** **FEATURES**  
0.9-1.0mm

0.9-1.0mm thick leather shell  
Fixed lining  
4 exterior & 1 interior pocket  
Zip side expansion panels  
V-Twin Fit

**S-5XL**

2868674



**LARGE SIZES**

 INDIAN MOTORCYCLE® VEST 2, BLACK

AVAILABLE FOR DELIVERY NOW

This black leather vest with laced side seams is a traditional staple for the cruiser rider. The laces can be adjusted to allow expansion where needed. The logos are a combination of embroidery and leather applique.

**CASUAL**

**FEATURES**

1.0-1.2mm

- 1.0-1.2mm thick dull leather shell
- Fixed lining
- 2 exterior & 1 interior pocket
- Lace up sides
- V-Twin Fit

**S-5XL**

2863711



// LARGE SIZES

ROGUE

**FLINT JACKET, BLACK**

AVAILABLE FOR DELIVERY NOW

A water resistant jacket featuring contrast colored panels and a removable quilted liner to keep the wearer warm and dry. Ventilation panels allow cooling airflow on warmer days.

CE

**FEATURES**

Fixed Lining- airmesh  
Removable liner- quilted vest  
Hidden ventilation panels on arms & back  
Reflective piping on back  
2 exterior & 1 interior pocket  
Side adjust zippers & snap wrist cuffs  
V-Twin Fit  
CE certified; EU Regulation 2016/425  
prEN 17092-4:2018

**ADDITIONAL FEATURES**

Removable CE protectors in shoulders & elbows (EN 1621-1:2012); action back; embroidered logo on front; applique & embroidered branding on back; snap down collar; circle headaddress patch on right sleeve

S-5XL

2869636



// TALL SIZES

// LARGE SIZES

ROGUE

**BECKMAN JACKET, BLACK**

AVAILABLE FOR DELIVERY NOW

A timeless leather riding jacket in jet black leather. The self colored stripes and angular panel lines are modern and masculine. Hidden vents help with airflow on warm days and a removable quilted liner offers insulation on cooler rides.

CE

**FEATURES**

1.0-1.2mm leather shell  
Fixed lining- airmesh  
Removable liner- quilted vest  
Hidden ventilation panels on arms & back  
2 exterior & 1 internal pocket  
Side adjust zippers & snap wrist cuffs  
V-Twin Fit  
CE certified; EU Regulation 2016/425  
prEN 17092-4:2018

**ADDITIONAL FEATURES**

Removable CE protectors in shoulders & elbows (EN 1621-1:2012); action back; antique brass zippers; reflective piping on back; embroidered logo on front; applique & embroidered branding on back; snap down collar

S-5XL, XLT-3XLT

2869635





**NEW**

TALL SIZES

LARGE SIZES

**ETA MARCH**

**ROGUE**

## SOFTSHELL CASUAL JACKET, BLACK

A casual hooded softshell jacket with fleece interior, offers warmth and wind resistance on cooler days.

### FEATURES

- Unlined
- 3 exterior pockets
- Hood
- Reflective trim on hood and chest zipper
- V-Twin Fit

XS-5XL, XLT-3XLT 2869741



TALL SIZES

LARGE SIZES

**HERITAGE**

## SPRINGFIELD MESH 2 JACKET, BLACK

**CE**

AVAILABLE FOR DELIVERY NOW

A slick update on the original Springfield Mesh jacket for riding in warmer climates. Mesh panels allow air to flow freely helping the rider stay cool. There are leather powerstretch panels on the elbows for flexibility. A removable lightweight windproof liner offers insulation when temperatures drop.

**MESH**

### FEATURES

- Fixed lining- airmesh
- Windproof removable liner- long sleeve
- 2 exterior & 2 interior pockets
- Powerstretch elbow panels; zip side adjusters; snap cuff
- V-Twin Fit
- CE certified; EU Regulation 2016/425 prEN 17092-4:2018

### ADDITIONAL FEATURES

- Removable CE protectors in shoulders & elbows (EN 1621-1:2012); action back; 3M® reflective piping; patch on chest; script logo embroidered & applique on back; headress patch on right sleeve; American flag patch on left sleeve

S-5XL, XLT-3XLT 2868916



// LARGE SIZES

## HERITAGE INDIAN MOTORCYCLE® COLOR BLOCK RAINSUIT - UNISEX, BLACK

AVAILABLE FOR DELIVERY NOW

A two piece jacket and pant rainsuit constructed of waterproof and breathable nylon. Every seam is taped to ensure you stay dry in the rain. Designed to be worn over your leathers this is a large fit. The pant has removable suspenders.

### WATERPROOF

#### FEATURES

Fixed lining- airmesh  
1 interior pocket  
Adjustable Velcro® cuffs & waist; stirrups; full length Velcro® on front opening to reinforce zip closure  
V-Twin Fit

#### ADDITIONAL FEATURES

100% waterproof & breathable; reflective piping; removable suspenders; stows into self storage bag attached to jacket lining; branding on the front, legs & back

XS-5XL

2867447







HERITAGE

## SPRINGFIELD MESH 2 JACKET, BLACK

AVAILABLE FOR DELIVERY NOW

A slick update on the original Springfield Mesh jacket for riding in warmer climates. Mesh panels allow air to flow freely, helping the rider stay cool. There are leather powerstretch panels on the elbows for flexibility. A removable lightweight windproof liner offers insulation when temperatures drop.

MESH

### FEATURES

Fixed lining- airmesh  
Windproof removable liner- long sleeve 2 exterior & 2 interior pockets  
Powerstretch elbow panels; zip side panels; snap cuffs  
Women's V-Twin Fit  
CE certified; EU Regulation 2016/425 prEN 17092-4:2018

### ADDITIONAL FEATURES

Removable CE protectors in shoulders & elbows (EN 1621-1:2012); 3M® reflective piping; action back; patch on chest; script logo applique & embroidered on back; leather logo patch on back; headress patch on right sleeve; American flag patch on left sleeve

XS-3XL

2869625

LARGE SIZES

HERITAGE

## INDIAN MOTORCYCLE® VEST 2, BLACK

AVAILABLE FOR DELIVERY NOW

A traditional staple for cruiser riders. The side laces can be adjusted to allow expansion where needed. The logos are a combination of embroidery and leather applique. Branded rivets decorate the shoulder and back panel.

CASUAL

### FEATURES

1.0-1.2mm thick leather shell  
Fixed lining  
2 exterior & 1 interior pocket  
Lace up sides  
Women's V-Twin Fit

XS-3XL, 1W-3W

2863716





NEW

ETA MARCH

ROGUE

**LANA DENIM JACKET, BLACK**

This is a casual denim jacket with light wash for worn in look. Jacket has tonal embroidered icon logo on back neck.

**CASUAL FEATURES**

Unlined  
4 exterior pockets  
Snap down collar  
Front zip covered with snap down placket  
Zip cuffs

XS-3XL

2860623



NEW

ETA MARCH

ROGUE

**SOFTSHELL JACKET, BLACK**

A casual hooded softshell jacket with fleece interior, offers warmth and wind resistance on cooler days.

**CASUAL FEATURES**

Unlined  
3 exterior pockets  
Hood  
Reflective trim on hood and sleeve zipper  
Women's V-Twin Fit

XS-3XL

2869754



**NEW**

**ETA MARCH**

## MESH 2 GLOVE, BLACK

CE

**SUMMER** An update on our popular Mesh Glove. A combination of mesh to allow airflow and leather palm and finger panels construct this glove. The lightweight design offers very little bulk and is easy to wear in warm weather conditions.

### FEATURES

Mesh glove with leather palm  
Gel padded palm  
Velcro® wrist closure  
Touchscreen index tip  
Mens & Womens CE certified; EU  
Regulation 2016/425. EN13594:2015

**MEN'S: S-4XL 2860629**  
**WOMEN'S: S-XL 2860630**

**FINAL SEASON**

## DRIFTER MESH GLOVE, BLACK

CE

AVAILABLE FOR DELIVERY NOW. FINAL SEASON

**SUMMER** Constructed using a combination of mesh, to allow airflow, and leather palm and finger panels. This lightweight glove is easy to wear in warm weather conditions.

### FEATURES

Mesh glove with leather palm & wrist  
Velcro® wrist closure Touchscreen leather  
on fingertip & thumb Mens CE certified;  
Directive 89/686/EEC.  
EN 13594:2015

**S-4XL 2867449**



**FINAL SEASON**

## FINGERLESS GLOVE, BLACK

AVAILABLE FOR DELIVERY NOW. FINAL SEASON

**SUMMER** A cruiser style fingerless glove in black leather. A double leather and gel palm panel adds comfort. The hooks on the end of the finger tips allow the glove to be removed easily.

### FEATURES

Full leather construction  
Gel padded palm  
Velcro® wrist closure  
Laser etched logo

**MEN'S: S-4XL 2863720**  
**WOMEN'S: S-XL 2863721**



**NEW**

**ETA MARCH**

## FLAT TRACK GLOVE, BLACK

CE

**MID SEASON** This is a sporty riding glove with leather palm and neoprene back of hand construction. This glove offers hard knuckle protection.

### FEATURES

Leather & neoprene construction  
Hard knuckle protector  
Velcro® wrist closure  
Mens CE certified; EU Regulation  
2016/425. EN13594:2015

**S-4XL 2860626**





NEW

ETA MARCH

## GETAWAY GLOVE, BROWN



MID SEASON

A modern classic brown leather glove for mid season riding.

## FEATURES

Full leather construction  
Interior Lining  
Velcro® wrist closure  
Mens & Womens CE certified; EU  
Regulation 2016/425. EN13594:2015

S-4XL

2860624



NEW

ETA MARCH

## RETRO 2 GLOVE, BLACK



MID SEASON

An update on our popular Retro Glove. Black leather with Indian Motorcycle® red and cream leather panels. This glove is a perfect match to several of the Indian Motorcycle® jackets. The padded knuckle, double leather contrast palms and cool branding make this a stylish glove.

## FEATURES

Full leather construction  
Padded knuckles  
Velcro® wrist closure  
Mens & Womens CE certified; EU  
Regulation 2016/425. EN13594:2015

MEN'S: S-4XL  
WOMEN'S: S-XL

2860627  
2860628



## CINDER GLOVE, BROWN



AVAILABLE FOR DELIVERY NOW

MID SEASON

A sporty style glove with contrasting perforated panels, Velcro® closure, and emblem patch. Complements nicely with the Benjamin Jacket.

## FEATURES

Full leather construction  
Padded palm  
Velcro® wrist closure  
Touchscreen fingertip & thumb  
Mens CE certified; Directive 89/686/EEC.  
EN 13594:2015

S-4XL

2868678



## SOLO GLOVE, BLACK



AVAILABLE FOR DELIVERY NOW

MID SEASON

A strong and lightweight glove with hard knuckle protector offers protection and modern style.

## FEATURES

Mixed textile & leather construction Hard  
knuckle protector  
Velcro® wrist closure  
Touchscreen fingertip & thumb  
Mens CE certified; Directive 89/686/EEC.  
EN 13594:2015

S-4XL

2868679



## PASSAGE GLOVE, BLACK



AVAILABLE FOR DELIVERY NOW

MID SEASON

A modern and stylish glove with hard knuckle protector, outer padding and Velcro® strap closure.

## FEATURES

Mixed textile & leather construction Hard  
knuckle protector  
Velcro® wrist closure  
Touchscreen index & thumb tips  
Mens CE certified; Directive 89/686/EEC.  
EN 13594:2015

S-4XL

2868680



## CLASSIC GLOVE, BLACK



AVAILABLE FOR DELIVERY NOW

MID SEASON

Mid season, classic black leather glove. Simple styling with double leather panels, perforated leather finger panels and Velcro® closure.

## FEATURES

Full leather construction  
Perforated inner finger panels  
Exposed seam construction with double  
leather panel on palms  
Velcro® wrist closure  
Mens & Womens CE certified; EU  
Regulation 2016/425. EN13594:2015'

MEN'S: S-4XL  
WOMEN'S: S-XL

2869717  
2869718



FINAL SEASON

## DEERSKIN STRAP GLOVE, BROWN

AVAILABLE FOR DELIVERY NOW. FINAL SEASON

MID SEASON

A deerskin glove in a classic style with Velcro® closure for wearing mid season.

## FEATURES

Full deerskin leather construction  
Heat branding on wrist  
Velcro® wrist closure

S-4XL

2868677



## WINTER GLOVE, BLACK



AVAILABLE FOR DELIVERY NOW

WINTER

A warm insulated glove for winter riding, with hard knuckle protectors. A Velcro® wrist adjuster and draw cord cuff keep the cold out.

## FEATURES

Mixed textile & leather construction Hard  
knuckle protector  
Velcro® wrist closure  
Touchscreen index & thumb tips  
Men's CE certified; EU Regulation  
2016/425. EN13594:2015

S-4XL

2869729







## ADVENTURE HELMET - MATTE STRIPE, GRAY

AVAILABLE FOR DELIVERY NOW

### FEATURES

Matte finish  
100% fiberglass outer shell; EPS inner shell  
Fixed lining  
Weight: 1250g  
Safety: DOT certified; ECE certified

### ADDITIONAL FEATURES

Detachable cheek pads & sun peak;  
D-ring closure; goggle fastener at back;  
Bluetooth® compatible

**XS-2XL 2869727**



## ADVENTURE HELMET - GLOSS BLACK, BLACK

AVAILABLE FOR DELIVERY NOW

### FEATURES

Glossy finish  
100% fiberglass outer shell; EPS inner shell  
Fixed lining  
Weight: 1250g  
Safety: DOT certified; ECE certified

### ADDITIONAL FEATURES

Detachable cheek pads & sun peak;  
D-ring closure; goggle fastener at back;  
Bluetooth® compatible

**XS-2XL 2869728**



## FINAL SEASON

## FREEWAY HELMET, BLACK

AVAILABLE FOR DELIVERY NOW. FINAL SEASON

### FEATURES

Matte ABS outer shell; EPS inner shell  
Removable, washable lining  
Weight: 1450g  
Safety: DOT certified; ECE certified

### ADDITIONAL FEATURES

Anti-fog Pinlock® 30, anti-scratch shield  
coatings; chin & top vents; Bluetooth®  
compatible, inner sun visor

**XS-2XL 2867453**





### LIBERTY JET HELMET, BLACK

AVAILABLE FOR DELIVERY NOW

#### FEATURES

Matte ABS outer shell; EPS inner shell  
Removable, washable lining  
Weight: 1250g  
Safety: DOT certified; ECE certified

#### ADDITIONAL FEATURES

Anti-scratch visor; top & rear vents;  
inner sun visor; Bluetooth® compatible

**XS-2XL    2867454**



### ADVENTURE HELMET SUNPEAK

AVAILABLE FOR DELIVERY NOW

Only works with the following helmets, 2869727 & 2869728.

<b>ONE SIZE</b>	<b>2869793</b>
<b>MATTE STRIPE</b>	
<b>WHITE</b>	<b>2869794</b>



// FINAL SEASON

### FREEWAY FULL FACE HELMET VISOR

AVAILABLE FOR DELIVERY NOW. FINAL SEASON

<b>ONE SIZE</b>	<b>2867460</b>
-----------------	----------------



### LIBERTY JET HELMET VISOR

AVAILABLE FOR DELIVERY NOW

<b>ONE SIZE</b>	<b>2867461</b>
-----------------	----------------



### RETRO FULL FACE HELMET VISOR

AVAILABLE FOR DELIVERY NOW

Only works with the following full face helmets, 2868683 & 2869630.

<b>ONE SIZE</b>	<b>2868890</b>
<b>GRAY</b>	
<b>CLEAR</b>	<b>2868829</b>







## MATTE STRIPE FULL FACE HELMET, BLACK

AVAILABLE FOR DELIVERY NOW

### FEATURES

UV lacquer finish  
100% fiberglass outer shell; EPS inner shell  
Fixed inner lining  
Weight: 1450g  
Safety: DOT certified; ECE certified

### ADDITIONAL FEATURES

Anti-fog Pinlock® 30, anti-scratch shield coatings; detachable cheek pads; D-ring closure; Bluetooth® compatible

XS-2XL

2869630



## RETRO FULL FACE HELMET, WHITE

AVAILABLE FOR DELIVERY NOW

### FEATURES

Glossy, UV lacquer finish  
100% fiberglass outer shell; EPS inner shell  
Fixed inner lining  
Weight: 1450g  
Safety: DOT certified; ECE certified

### ADDITIONAL FEATURES

Anti-fog Pinlock® 30, anti-scratch shield coatings; detachable cheek pads; quick release chin strap; Bluetooth® compatible

XS-2XL

2868683

### // LARGE SIZES

## RETRO OPEN FACE HELMET, RED

AVAILABLE FOR DELIVERY NOW

### FEATURES

Glossy UV lacquer finish  
100% fiberglass outer shell; EPS inner shell  
Fixed lining  
Weight: 1150g  
Safety: DOT certified; ECE certified

### ADDITIONAL FEATURES

Detachable sunpeak & cheek pads; D ring closure; goggle fastener at back; Bluetooth® compatible; Chrome piping

XS-4XL

2868872






**LARGE SIZES**
**RETRO OPEN FACE HELMET, BLACK**

AVAILABLE FOR DELIVERY NOW

**FEATURES**

Glossy UV lacquer finish  
 100% fiberglass outer shell; EPS inner shell  
 Fixed lining  
 Weight: 1150g  
 Safety: DOT certified; ECE certified

**ADDITIONAL FEATURES**

Detachable sunpeak & cheek pads;  
 D-ring closure; goggle fastener at back;  
 Bluetooth® compatible; Chrome piping

**XS-4XL**
**2868870**

**LARGE SIZES**
**RETRO OPEN FACE HELMET, MATTE BLACK**

AVAILABLE FOR DELIVERY NOW

**FEATURES**

Matte UV lacquer finish  
 100% fiberglass outer shell; EPS inner shell  
 Fixed lining  
 Weight: 1150g  
 Safety: DOT certified; ECE certified

**ADDITIONAL FEATURES**

Detachable sunpeak & cheek pads; D-ring closure;  
 goggle fastener at back; Bluetooth® compatible

**XS-4XL**
**2868869**

**LARGE SIZES**
**RETRO OPEN FACE HELMET, SILVER**

AVAILABLE FOR DELIVERY NOW

**FEATURES**

Glossy UV lacquer finish  
 100% fiberglass outer shell; EPS inner shell  
 Fixed lining  
 Weight: 1150g  
 Safety: DOT certified; ECE certified

**ADDITIONAL FEATURES**

Detachable sunpeak & cheek pads;  
 D-ring closure; goggle fastener at back;  
 Bluetooth® compatible

**XS-4XL**
**2868871**



## // LARGE SIZES

### CARBON OPEN FACE HELMET, BLACK

AVAILABLE FOR DELIVERY NOW

#### FEATURES

Matte UV lacquer finish 100% carbon fiber outer shell; EPS inner shell  
Fixed lining  
Weight: 1050g  
Safety: DOT certified; ECE certified

#### ADDITIONAL FEATURES

Detachable sunpeak & cheek pads;  
D-ring closure; goggle fastener at back;  
Bluetooth® compatible

XS-4XL

2869633



## // LARGE SIZES

### OPEN FACE HELMET - STRIPE, WHITE

AVAILABLE FOR DELIVERY NOW

#### FEATURES

Glossy UV lacquer finish  
100% fiberglass outer shell; EPS inner shell  
Fixed lining  
Weight: 1150g  
Safety: DOT certified; ECE certified

#### ADDITIONAL FEATURES

Detachable sunpeak & cheek pads;  
D-ring closure; goggle fastener at back;  
Bluetooth® compatible

XS-4XL

2869628



## // LARGE SIZES

### OPEN FACE HELMET - MATTE STRIPE, BLACK

AVAILABLE FOR DELIVERY NOW

#### FEATURES

Matte UV lacquer finish  
100% fiberglass outer shell; EPS inner shell  
Fixed lining  
Weight: 1150g  
Safety: DOT certified; ECE certified

#### ADDITIONAL FEATURES

Detachable sunpeak & cheek pads;  
D-ring closure; goggle fastener at back;  
Bluetooth® compatible

XS-4XL

2869629





# // LARGE SIZES

## TWO TONE OPEN FACE HELMET, SILVER/BLACK

AVAILABLE FOR DELIVERY NOW

### FEATURES

Glossy UV lacquer finish  
100% fiberglass outer shell; EPS inner shell  
Fixed lining  
Weight: 1150g  
Safety: DOT certified; ECE certified

### ADDITIONAL FEATURES

Detachable sunpeak & cheek pads;  
D-ring closure; goggle fastener at back;  
Bluetooth® compatible; Chrome piping

XS-4XL

2868897



# // FINAL SEASON

# // LARGE SIZES

## SCOUT® OPEN FACE HELMET, BLUE/WHITE

AVAILABLE FOR DELIVERY NOW

### FEATURES

Glossy UV lacquer finish  
100% fiberglass outer shell; EPS inner shell  
Fixed lining  
Weight: 1150g  
Safety: DOT certified; ECE certified

### ADDITIONAL FEATURES

Detachable sunpeak & cheek pads;  
D-ring closure; goggle fastener at back;  
Bluetooth® compatible; Chrome piping

XS-4XL

2868895



# // LARGE SIZES

## RETRO OPEN FACE HELMET, WHITE

AVAILABLE FOR DELIVERY NOW

### FEATURES

Glossy UV lacquer finish  
100% fiberglass outer shell; EPS inner shell  
Fixed lining  
Weight: 1150g  
Safety: DOT certified; ECE certified

### ADDITIONAL FEATURES

Detachable sunpeak & cheek pads;  
D-ring closure; goggle fastener at back;  
Bluetooth® compatible

XS-4XL

2868884



## RETRO OPEN FACE HELMET BUBBLE VISOR

AVAILABLE FOR DELIVERY NOW

Only works with the following open face helmets: 2868684, 2868869, 2868870, 2868871, 2868872, 2868897, 2868895, 2869628, 2869633 & 2869629.

### ONE SIZE

A. CLEAR	2868873
B. GRAY	2868874
C. REFLECTIVE SILVER	2868875
D. ORANGE	2868876
E. RED	2868877



## RETRO OPEN FACE HELMET SUN PEAK

AVAILABLE FOR DELIVERY NOW

Only works with the following open face helmets: 2868684, 2868869, 2868870, 2868871, 2868872, 2868897, 2868895, 2869628, 2869633 & 2869629.

### ONE SIZE

2868830

## PINLOCK® 30 FOG RESISTANT INSERT LENS - CLEAR (NOT PICTURED)

AVAILABLE FOR DELIVERY NOW

### ONE SIZE

2867462







**FINAL SEASON**

### MEN'S MESH SNEAKER

AVAILABLE FOR DELIVERY IN MAY

Casual day sneaker. Vibram® sole to provide grip and abrasion resistance. The premium cow leather, antique silver eyelets and breathable mesh panel design make this sneaker a favorite.

#### FEATURES

1.4-1.5 mm thick durable cow leather  
Gusset tongue keeps out sand & water  
Antibacterial microfiber insock & mesh lining  
Includes black & red waxy shoe laces

SIZE: 7-13

2868685



### MEN'S SOCKS 2 PACK

AVAILABLE FOR DELIVERY NOW

Multi pack of branded Indian Motorcycle® socks. Each pack includes two pairs with different graphics. Socks have script logo and contrast stripes.

ONE SIZE (US 7-13) 2869777



**FINAL SEASON**

### MEN'S SNEAKER - BLACK

AVAILABLE FOR DELIVERY NOW

This sneaker provides a stable fit and protection. The Vibram® sole provides grip and abrasion resistance. The premium cow leather, antique silver eyelets and pinstripe design make this sneaker a favorite for riding and around town.

#### FEATURES

1.4-1.5mm thick durable cow leather  
Gusset tongue keeps out sand & water  
Antibacterial microfiber insock & mesh lining  
Ankle protector, toe cap & heel cup  
Gear shift pad  
Includes black & red waxy shoe laces  
CE certified. Personal Protective Equipment  
Regulation 2016/425; EN 13634:2017

SIZE: 7-13

2867689

CE



### MEN'S SOCKS 3 PACK

AVAILABLE FOR DELIVERY NOW

Multi pack of branded Indian Motorcycle® socks. Each pack includes three colors; black, gray and navy.

ONE SIZE (US 7-13) 2868691



### MEN'S CLASSIC MOC - BROWN

AVAILABLE FOR DELIVERY NOW

This 8-inch lifestyle moccasin boot is developed to provide a stable fit and protection with an ecru Vibram® sole. The premium cow leather, antique brass eyelets and all brown stitching make these boots a favorite for riding and being seen around town.

#### FEATURES

1.4-1.5mm thick durable cow leather  
Gusset tongue & zipper keep out sand & water  
Antibacterial microfiber insock & mesh lining  
Ankle protector, toe cap & heel cup  
Gear shift pad  
Includes brown & ecru waxy shoe laces  
CE certified. Personal Protective Equipment  
Regulation 2016/425; EN 13634:2017

SIZE: 7-13

2867691

CE

### NEED A REPAIR?

Nu Shoe® is the official cobbler for all Vibram® sole replacements.

[www.nushoe.com/indian-boot-repair](http://www.nushoe.com/indian-boot-repair)  
Toll free number: 1-877-687-4631





## MEN'S ENGINEER, BLACK

AVAILABLE FOR DELIVERY NOW. FINAL SEASON

This 7.5-inch boot is an iconic short Engineer style with burnish suede back panel. It features an internal YKK® zipper for easy pull-on and a Vibram® sole to provide grip and abrasion resistance. The premium cow leather, original Indian Motorcycle® buckles and all black stitching will have you riding in style.



### FEATURES

1.4-1.5mm thick durable cow leather  
Strap & elastic gusset to adjust the fitting  
Antibacterial microfiber insock & mesh lining  
Ankle protector, toe cap & heel cup  
Gusset zipper keeps out sand & water  
CE certified. Personal Protective Equipment  
Regulation 2016/425; EN 13634:2017

Size: 7-13

2867690



## MEN'S CLASSIC LACE UP, BLACK

AVAILABLE FOR DELIVERY NOW

This 8-inch classic lace up boot is developed to provide a stable fit and protection, it has a Vibram® sole to provide grip and abrasion resistance. The premium cow leather, antique silver eyelets and all black stitching make these boots a favorite for riding and being seen around town.



### FEATURES

1.4-1.5mm thick durable cow leather  
Gusset tongue keeps out sand & water  
Antibacterial microfiber insock & mesh lining  
Ankle protector, toe cap & heel cup  
Certified slip resistance outsole  
Internal YKK® zipper for easy pull-on  
Includes black & mix combo colored waxy shoe laces  
CE certified. Personal Protective Equipment  
Regulation 2016/425; EN 13634:2017

Size: 7-13

2867688



## FINAL SEASON WOMEN'S TALL ENGINEER, BROWN

AVAILABLE FOR DELIVERY NOW. FINAL SEASON

This 13-inch boot is a casual tall Engineer style with burnish suede back panel. It features an internal YKK® zipper an easy opening, with heeled wooden sole and an elastic gusset to adjust the fitting.

### FEATURES

1.4-1.5mm thick durable cow leather  
Strap & elastic gusset to adjust the fitting  
Antibacterial microfiber insock & mesh lining  
Gusset zipper keeps out sand & water

Size: 5-11

2863964







FINAL SEASON

## MEN'S WORTHINGTON BOOT, BLACK

AVAILABLE FOR DELIVERY NOW. FINAL SEASON

This boot is based on Red Wing Shoes® classic Engineer style and has been modified for Indian Motorcycle® riders. This 11-inch pull-on boot features plain toe styling, a Vibram® 430 sole to provide higher grip and abrasion resistance and an instep strap to adjust the fitting. The premium Red Wing Shoes® Black Harness leather, original Indian Motorcycle® buckles, embossed logo and all black stitching will have you riding in style. These boots feature Goodyear welt construction and triple stitched quality.



### FEATURES

- 2.0-2.2mm thick durable Red Wing® work boots leather
- Instep strap to adjust the fitting
- Leather Insole
- Traditional Engineer style from 1930s
- Original Indian Motorcycle® logo buckles
- Goodyear welt construction, repairable outsole construction

SIZE: 7-13

2864411





### BE LEGENDARY TEE

This navy tee shows the Indian Motorcycle® icon logo printed large across the back, in a distressed discharge print. The Indian Motorcycle® logo is printed small on the chest.

Fabric: 100% cotton single jersey  
Graphics: Small logo print on front; large distressed icon print on back

S-3XL 2867589



FINAL SEASON

### IMC IG BLACK TEE

A black slub tee, featuring a large distressed discharge print graphic on the front.

Fabric: 100% cotton slub  
Graphics: Large distressed print on front, small print at back neck; small "Since 1901" embroidery at back hem

S-3XL 2866271



NEW

### BOMBER GIRL TANK, NAVY

Fabric: 100% cotton marl  
Graphics: Print on front

HERITAGE

S-3XL

2860771





NEW

// LARGE SIZES

### AMERICAN ORIGINAL TEE, NAVY

Fabric: 100% cotton  
Graphics: Print on front

S-5XL

2860773

HERITAGE



// FINAL SEASON

### RACING SHIRT

Our IMC Racing official team jersey.  
A short sleeve racing shirt, with all over sublimation print.

Fabric: 100% polyester  
Graphics: Full sublimation print

S-3XL

2868866



### SLEEVELESS SCRIPT ICON TEE, BLACK

This comfortable sleeveless all-cotton tee has Indian Motorcycle® branding printed on the front and back and deep-cut armholes.

Fabric: 100% cotton single jersey  
Graphics: Distressed logo print on front & back

S-5XL

2865172



NEW

// LARGE SIZES

### BOMBER GIRL TEE, RED

Fabric: 100% cotton marl  
Graphics: Print on front

S-5XL

2860772

HERITAGE



NEW

// LARGE SIZES

### CRAFTED TEE, GRAY

Fabric: 100% cotton marl  
Graphics: Print on front

S-5XL

2860774

HERITAGE



// FINAL SEASON

### SCOUT® LOGO TEE, RED

Indian® Scout® riders and enthusiasts will appreciate this simple red tee with bold Indian® Scout® branding. The front logo is in a discharge print.

Fabric: 100% cotton single jersey  
Graphics: Logo print on front and back; woven patch on right sleeve

S-3XL

2863816

VERY  
LIMITED  
STOCK





// LARGE SIZES

HERITAGE

## COLOR HEADADDRESS TEE, GRAY

Fabric: 100% cotton  
Graphics: Print on front

S-5XL

2869660



HERITAGE

## MARL TEE, RED

Fabric: 100% cotton marl  
Graphics: Print on front

S-3XL

2869657



// LARGE SIZES

HERITAGE

## LOGO TEES

Fabric: 100% cotton  
Graphics: Print on front

S-5XL

ANTIQUE WHITE

2867945

ECRU (BLACK TEE)

2863317 MOST POPULAR

GREY

2863810



HERITAGE

## MONTAGE TEE, GRAY

Fabric: 100% cotton marl  
Graphics: Print on front and back

S-3XL

2869733



## MENS RACING TEAM TEE

S-3XL

2868904



## MENS CHECKERED FLAG TEE

S-3XL

2868902



LARGE SIZES

### ICON LOGO TEE, WHITE

Fabric: 100% cotton  
Graphics: Print on front

S-5XL

2869661



### QUICK DRY LOGO TEE, GRAY

This tee offers UV protection SPF50,  
quick dry and high wicking properties.

Fabric: 100% polyester  
Graphics: Print on front

S-3XL

2869665



NEW

INSTOCK

### SLEEVELESS QUICK DRY TEE

This tank offers UV protection SPF50,  
quick dry and high wicking properties to  
keep you cool and dry on summer rides.

Fabric: 100% polyester  
Graphics: Small logo on front & back neck

S-3XL

2869656



FINAL SEASON

### WRECKING CREW TEE, GRAY

Fabric: 100% cotton  
Graphics: Print on front, back and sleeves

S-3XL

2869743



### FTR BIKE SKETCH TEE, BLACK

Fabric: 100% cotton  
Graphics: Print on front  
Fit: Fashion

S-3XL

2869731



NEW

### MOTOCROSS TEE, WHITE

Fabric: 60% cotton, 40% polyester slub  
Graphics: Print and embroidery on front  
Fit: Fashion

S-3XL

2860807





NEW

### LEGEND TEE, BLUE

Fabric: 100% cotton marl  
Graphics: Print on front  
Fit: Fashion

S-3XL

2860792

MOTO

### WRECKING CREW TEE

A short sleeved tee with large applique on the front and back, and contrasting sleeves.

Fabric: 100% cotton slub jersey  
Graphics: Embroidery & applique on front & back

S-3XL

2868860

NEW

### BIKE TEE, GRAY

Fabric: 100% cotton marl  
Graphics: Print on front  
Fit: Fashion

S-3XL

2860789

MOTO



NEW

### GRAPHIC TEE, GRAY

Fabric: 100% cotton marl  
Graphics: Print on front  
Fit: Fashion

S-3XL

2860790

### SHIELD CAMO TEE, BLACK

AVAILABLE FOR DELIVERY NOW

Fabric: 100% cotton  
Graphics: Print on front

S-3XL

2869684

### MENS CHAMPIONS TEE

S-3XL

2868910

MOTO

MOTO





MOTO

## FTR FRONT TEE, WHITE

AVAILABLE FOR DELIVERY NOW

Fabric: 100% cotton  
Graphics: Print on front  
Fit: Fashion

S-3XL

2869732



MOTO

## HAND PAINTED TEE

AVAILABLE FOR DELIVERY NOW

Fabric: 100% cotton  
Graphics: Print on front  
Fit: Fashion

S-3XL

NAVY

2869682



MOTO

## ADVENTURE TEE, GRAY

AVAILABLE FOR DELIVERY NOW

Fabric: 100% cotton  
Graphics: Print on front  
Fit: Fashion

S-3XL

2869688



MOTO

## FTR™ 1200 LOGO TEE

AVAILABLE FOR DELIVERY NOW

Fabric: 100% cotton  
Graphics: Print on front  
Fit: Fashion

S-3XL

BLACK

2868965

ECRU

2868966



MOTO

## SHIELD 1200 TEE, BLACK

AVAILABLE FOR DELIVERY NOW

Fabric: 100% cotton  
Graphics: Print on front  
Fit: Fashion

S-3XL

2869690



MOTO

## 1901 BONNEVILLE TEE, WHITE

Fabric: 100% cotton  
Graphics: Print on front  
Fit: Fashion

S-3XL

2869746



### 1901 SALT FLATS TEE, RED

Fabric: 100% cotton  
Graphics: Print on front  
Fit: Fashion

S-3XL

2869747



### 1901 MUNRO TEE, GRAY

Fabric: 100% cotton  
Graphics: Print on front  
Fit: Fashion

S-3XL

2869748



### NEW

### UV RACING TEE

Celebrate the excitement and energy of the American Flat Track with this racing style tee. This long sleeved tee uses a bamboo charcoal coating to offer UV protection SPF50, along with thermal control, dry fast, and high wicking properties, to keep you cool and dry on summer rides.

Fabric: 100% polyester  
Graphics: Small FTR™ 1200 logo on chest; large logo on back; logo on left sleeve; thumb holes at cuff

S-3XL

2868970



### IMC BIKE TEE

FINAL SEASON

This red Indian Motorcycle® short sleeve tee is made in a cotton jersey slub and features a bike print using water-based inks for a soft feel.

Fabric: 100% cotton slub jersey  
Graphics: Large distressed print on front; small logo print on back neck; woven patch on right sleeve; "Since 1901" embroidered at back hem

S-3XL

2868923







## LONG SLEEVE HEADDRESS TEE

This tee features 2 in 1 sleeves, with a contrasting long sleeve under the short sleeve for a layered look. The Indian Motorcycle® headdress is printed in full color across the front.

Fabric: 100% cotton slub jersey  
Graphics: Large distressed headdress print on front; small logo print on back; "Since 1901" embroidered on back hem; woven patch on right sleeve

**S-3XL 2868808**



## MUNRO 1967 TEE

This Indian Motorcycle® red tee celebrates the record breaking achievement of Burt Munro, with a large front graphic featuring the Scout® Streamliner.

Fabric: 100% cotton single jersey  
Graphics: Large distressed print on front; embroidered "B. Munro" on front hem; woven patch on right sleeve

**S-3XL 2868812**



## WRECKING CREW TEE, PORT

This dark red tee has a large front graphic based around the 'Wrecking Crew' racing team.

Fabric: 100% cotton single jersey  
Graphics: Large distressed print on front; small racing logo on back; "Since 1901" embroidered on back hem; woven patch on right sleeve

**S-3XL 2868817**



## BOMBER GIRL PRIDE TEE

Large front graphic featuring a retro styled pin-up girl.

Fabric: 100% cotton single jersey  
Graphics: Distressed print on front; small distressed logo print on back; "Since 1901" embroidered on back hem; woven patch on right sleeve

**S-3XL 2868809**



**NEW**

## COLOR HEADDRESS TEE

Celebrate the Indian Motorcycle® brand with this hand painted, full color headdress print.

Fabric: 100% cotton single jersey  
Graphics: Large hand painted logo on front; small logo on back neck; woven patch on right sleeve

**S-5XL 2869660**



## WAFFLE HENLEY

A long sleeve gray marl tee made in a textured waffle knit, the honeycomb design of the fabric allows air to flow easily so that the fabric dries quickly.

Fabric: 100% cotton waffle  
Graphics: Small embroidered logo on front & back; leather patch at hem

**S-3XL 2868925**



### ICON SCRIPT HOODIE

This soft, all-cotton hoodie features a winning combination of red, black, and ecru, and it has handwarmer pockets and a warm drawstring hood. There is embroidered Indian Motorcycle® branding on the front and back.

Fabric: 100% cotton loopback

Graphics: Embroidered logo on front & back

Additional Features: Two hand warmer pockets with snap closure; drawstring hood

S-3XL

2865194



**NEW**

**LARGE SIZES**

### TONAL HOODIE, GRAY

Fabric: 55% cotton, 45% polyester marl loopback  
Graphics: Print on front and sleeve

S-5XL

2860783



**ROGUE**

### CHECKERED HOODIE, BLACK

AVAILABLE FOR DELIVERY NOW

Fabric: 100% cotton loopback  
Graphics: Printed hood lining, embroidery on back

S-3XL

2868971



### MENS WRECKING CREW HOODIE

S-3XL

2868906





ROGUE

### WRECKING CREW STRIPE SWEAT, GRAY

AVAILABLE FOR DELIVERY NOW

Fabric: 100% cotton loopback  
Graphics: Print on front, back and sleeves

S-3XL

2869745

### QUARTER ZIP FLEECE

A classic and comfortable black fleece, with quarter zip at neck and Indian Motorcycle® branding.

Fabric: 100% polyester fleece  
Graphics: Embroidered logo on front & back

S-3XL

2866161

### IMC CONTRAST ZIP THRU

This contrasting zip-thru comes in light gray and dark gray marl. It features a large applique/embroidery on the back in antique white, and a small embroidery at the front chest. Branded zip pulls are used, along with a leather-look patch at the front hem.

Fabric: 70% cotton, 30% polyester loopback  
Graphics: Small embroidered logo on chest, large embroidered print on back; leather-look patch on front hem; embroidered patch on right sleeve

S-3XL

2867566



NEW

### RAGLAN TEE

Made in a soft slub jersey, this contrast raglan sleeve tee in moss gray and charcoal will be a casual staple during the upcoming weather transition months.

Fabric: 100% cotton slub jersey  
Graphics: Large graphic on front small logo print on back neck; woven patch on right sleeve

S-3XL

2869663



### LONG SLEEVE BOMBER GIRL PRIDE TEE

Large back graphic featuring a retro styled pin-up girl, and a large Indian Motorcycle® logo across the front chest and contrasting color sleeves for added style.

Fabric: 100% cotton single jersey  
Graphics: Distressed print on front & back; "Since 1901" embroidered on back hem; woven patch on right sleeve

S-3XL

2868810



LARGE SIZES

### LONG SLEEVE LOGO TEE, NAVY

Fabric: 100% cotton  
Graphics: Print on front

S-5XL

2869662

HERITAGE



NEW

### PRINTED SLEEVE TEE, BLACK

Fabric: 100% cotton  
Graphics: Print on front, back and sleeve

S-3XL

2860781

ROGUE





NEW

ROGUE

## WAFFLE PIQUET TEE, GRAY

Fabric: 60% cotton, 40% polyester marl  
Graphics: Print on front and back

S-3XL

2860782



ROGUE

## CHARCOAL MARL TEE, GRAY

Fabric: 100% cotton marl  
Graphics: Print on front

S-3XL

2869664



## LONG SLEEVE WRECKING CREW TEE

A long sleeved tee with large applique on the front and back, and contrasting sleeves.

Fabric: 100% cotton slub jersey  
Graphics: Embroidery & applique on front & back; faux leather patch on right sleeve; stitched on stripes on sleeves

S-3XL

2868819



FINAL SEASON

## 183MPH LS TEE

A long sleeved tee in red slub fabric. The front graphic celebrates the historic world record, broken on an Indian® motorcycle.

Fabric: 100% cotton slub jersey  
Graphics: Large distressed print on front; small distressed logo on back; printed contrast stripes on sleeves; embroidered "Since 1901" at back hem; woven patch on right sleeve

S-3XL

2867949

LIMITED  
STOCK  
AVAILABLE



## RACER TEE

S-2XL

2868907



HERITAGE

## BLOCK LOGO SWEAT, RED

Fabric: 70% cotton, 30% polyester marl loopback  
Graphics: Embroidery on front

S-3XL

2869667



HERITAGE

**CHARCOAL LOGO SWEAT, GRAY**

Fabric: 70% cotton, 30% polyester marl loopback Graphics: Embroidery on front

S-3XL

2869790



HERITAGE

**IMC HOODIE, BLACK**

Fabric: 70% cotton, 30% polyester brushback Graphics: Embroidery on front and back

S-3XL

2863697



HERITAGE

**LOGO HOODIE, GRAY**

Fabric: 70% cotton, 30% polyester marl brushback Graphics: Embroidery on front and back

S-3XL

2869734



HERITAGE

**ICON HOODIE, GRAY**

Fabric: 70% cotton, 30% polyester marl loopback Graphics: Print on front and back

S-3XL

2869666

**LOGO SWEAT**

This classic navy sweat features subtle Indian Motorcycle® branding across the front in navy applique and embroidery. A small embroidery is placed at the back neck.

Fabric: 100% cotton

Graphics: Large embroidered logo on front; embroidery on back neck; "Since 1901" embroidery at back hem; leather patch on right sleeve

S-3XL

2868929



NEW

ROGUE

**MERINO HALF ZIP, GRAY**

Keeps you warm in the cold and cool in the heat. Fit and features provide ultimate comfort. Breathes to prevent overheating. Non itchy and naturally odor resistant. Machine washable and dries fast.

Fabric: 95% Merino wool, 5% nylon Graphics: Print on front

S-3XL

2869736



NEW

HERITAGE

PLAID SHIRT, NAVY

Fabric: 100% cotton

S-3XL 2860778



HERITAGE

PLAID SHIRT, BLACK

Fabric: 100% cotton  
Graphics: Embroidery on back

S-3XL 2868933



NEW

ROGUE

BUFFALO PLAID SHIRT, GRAY

Fabric: 100% cotton  
Graphics: Embroidery on front

S-3XL 2860784





HERITAGE

### PLAID SHIRT, RED

Fabric: 100% cotton  
Graphics: Embroidery on front and back

S-3XL 2868821



// LARGE SIZES

HERITAGE

### CASUAL SHIRT, BLACK

Fabric: 65% polyester, 35% cotton  
Graphics: Embroidery on front and back

S-5XL 2863698



ROGUE

### PLAID SHIRT, GRAY

Fabric: 100% cotton  
Graphics: Embroidery on front

S-3XL 2868932



### NAVY PLAID SHIRT

This soft plaid shirt features two front pockets, embroidered Indian Motorcycle® logo at the back neck and a leather-look patch applied to the front hem. The buttons at the front fastening, pockets, and cuffs are all branded.

Fabric: 100% cotton  
Graphics: Embroidered logo at back neck;  
embroidered and applique logo on back; two  
leather-look patches on front; branded buttons

S-3XL 2867586



HERITAGE

## SPARKLE TEE, PORT

Fabric: 65% polyester, 35% rayon  
Graphics: Glitter print on front  
Fit: Relaxed

XS-3XL 2869671



HERITAGE

## ECRU LOGO V-NECK TEE, BLACK

Fabric: 95% cotton, 5% elastane  
Graphics: Print on front  
Fit: Close

XS-3XL 2863325



HERITAGE

## IMC MARL TEE, GRAY

Lace ties at side seams.

Fabric: 50% cotton, 50% modal marl  
Graphics: Print on front  
Fit: Relaxed

XS-3XL 2869669



HERITAGE

## STARLIGHT TEE, BLACK

Fabric: 50% cotton, 50% modal  
Graphics: Print and diamante on front  
Fit: Relaxed

XS-3XL 2869751



MOTO

## OPEN BACK TANK, GRAY

This tank features a split at the centre back, low enough to provide modesty.

Fabric: 65% polyester, 35% viscose slub  
Graphics: High density print on front  
Fit: Relaxed

XS-3XL 2869677



NEW

HERITAGE

## EMBELLISHED TEE, BLACK

Fabric: 95% cotton, 5% elastane  
Graphics: Embellished and printed on front  
Fit: Close

XS-3XL 2860794





NEW

### MOTO MOTOCROSS TEE, RED

Fabric: 60% cotton, 40% polyester slub  
Graphics: Print and embellished front  
Fit: Relaxed

XS-3XL 2860801



### MOTO GRADIENT LOGO TEE, BLACK

AVAILABLE FOR DELIVERY NOW

Fabric: 50% modal, 50% cotton  
Graphics: Print on front  
Fit: Relaxed

XS-3XL 2869709



FINAL SEASON

WOMEN'S FTR® 1200 LOGO TEE

Fabric: 100% cotton  
Graphics: Print on front and back  
Fit: Relaxed

XS-3XL  
ECRU 2868973  
BLACK 2868972

MOTO



NEW

GRADIENT LOGO TEE

This flattering scoop neck tee features the shield Indian Motorcycle® logo.

Fabric: 50% modal, 50% cotton  
Graphics: Large print on front; small print on back  
Fit: Close Fit

XS-3XL 2869709



FINAL SEASON

STRIPE SLEEVE TEE, GRAY

AVAILABLE FOR DELIVERY NOW. FINAL SEASON

Fabric: 100% cotton  
Graphics: Print on front and sleeves  
Fit: Relaxed

XS-3XL 2869673

MOTO



NEW

STARLIGHT TEE

Made in a black cotton/modal fabric, this style features a print with applied diamantes for that added sparkle.

Fabric: 50% cotton, 50% modal  
Graphics: Large print with rhinestones on front; glitter print on back neck  
Fit: Relaxed Fit

XS-3XL 2869751

MOTO





### QUICK DRY TANK

This tank offers UV protection SPF50, quick dry and high wicking properties to keep you cool and dry on summer rides.

Fabric: 100% polyester  
Graphics: Large headaddress logo print on front; small logo on back neck  
Fit: Close Fit

XS-3XL

2869679



### LOGO RAGLAN TEE

Made in a soft slub jersey, this 3/4 sleeve raglan tee in moss gray and charcoal will be a casual staple during the upcoming weather transition months.

Fabric: 100% cotton slub jersey  
Graphics: Large graphic on front; small logo on back neck; woven patch on right sleeve  
Fit: Relaxed Fit

XS-3XL

2869676



### COLD SHOULDER TEE

Add a twist to a casual wardrobe with this cold shoulder black tee. Made in a cotton/modal mix, this style features an embroidered Indian Motorcycle® headaddress logo at the front chest.

Fabric: 50% cotton, 50% modal  
Graphics: Large embroidered logo on front; "Since 1901" on back neck  
Fit: Relaxed Fit

XS-3XL

2868934



### PORT SPARKLE TEE

This tee uses a port color foil print for a subtle all over sparkle. The Indian Motorcycle® logo is printed across the chest in silver glitter print.

Fabric: 65% polyester, 35% rayon  
Graphics: Large glitter print logo on front; port foil print speckles across fabric  
Fit: Close Fit

XS-3XL

2869671





LARGE SIZES

HERITAGE

### WOMEN'S FTR™ 1200 LOGO TEE

Celebrate the excitement and energy of the American Flat Track with this 1200 tee.

Fabric: 100% cotton single jersey  
Graphics: Large print on front;  
small logo at back neck  
Fit: Close Fit

XS-3XL	
ECRU	2868973
BLACK	2868972



NEW

ROGUE

### HEADRESS HOODIE, BLACK

Fabric: 55% cotton, 45% polyester brushback  
Graphics: Print on front and back

XS-3XL 2860800





NEW

HERITAGE

**PLAID SHIRT, PORT**

This shirt has sleeve tab fastenings so you can wear the sleeves rolled up or down.

Fabric: 100% cotton  
Graphics: Embroidery on front and back

XS-3XL 2860806

**RED PLAID SHIRT**

AVAILABLE FOR DELIVERY NOW

A soft cotton, wardrobe staple with adjustable sleeve that can be worn 3/4 length or full length. This shirt comes in a slim, flattering fit.

Fabric: 100% cotton plaid  
Graphics: Embroidered logo on back  
Additional Features: Branded buttons; faux leather patch on chest pocket  
Fit: Close Fit

XS-3XL 2868805

**IMC MARL TEE**

A lightweight gray marl V-neck tee with lace ties at the side seams. An Indian Motorcycle® graphic is printed across the chest in an antique white, Indian Motorcycle® red and charcoal discharge ink.

Fabric: 50% cotton, 50% modal  
Graphics: Large graphic on front  
Fit: Relaxed Fit

XS-3XL 2869669

**ECRU LOGO V-NECK TEE**

AVAILABLE FOR DELIVERY NOW

This V-neck tee comes in a stretch fabric, and is cut for a close fit to the body. A large distressed Indian Motorcycle® logo is printed across the front.

Fabric: 95% cotton, 5% spandex stretch single jersey  
Graphics: Distressed Indian Motorcycle® logo on the front; patch with graphics on the sleeve  
Fit: Close Fit

S-3XL 2863325

**IMC CONTRAST ZIP THRU**

AVAILABLE FOR DELIVERY NOW

This classic gray marl zip-thru with contrast sleeves features a felt applique logo at the back, an embroidered script logo at the front chest and a headdress logo patch at the sleeve. This zip-thru is made in a soft cotton polyester mix and features a stylish collar.

Fabric: 70% cotton, 30% polyester  
Graphics: Embroidered logo on front; embroidered & applique logo on back; woven patch on right sleeve; leather look patch at hem  
Additional Features: Branded buttons & zippers

XS-3XL 2868943



**NEW**

## HAND PRINTED TEE, BLUE

Fabric: 100% cotton  
Graphics: Print on front

SIZE:	PART #:
6-7 YEARS/ S	286075602
8-9 YEARS/ M	286075603
10-11 YEARS/ L	286075606
12-14 YEARS/ XL	286075609



**NEW**

## HEADRESS ICON TEE, WHITE

Fabric: 60% cotton, 40% polyester slub  
Graphics: Print on front

SIZE:	PART #:
6-7 YEARS/ S	286075702
8-9 YEARS/ M	286075703
10-11 YEARS/ L	286075706
12-14 YEARS/ XL	286075709



**NEW**

## MOTOCROSS TEE, WHITE

Fabric: 60% cotton, 40% polyester slub  
Graphics: Print and embroidery on front

SIZE:	PART #:
6-7 YEARS/ S	286075802
8-9 YEARS/ M	286075803
10-11 YEARS/ L	286075806
12-14 YEARS/ XL	286075809





KID'S TEES								
YEARS	6-7		8-9		10-11		12-14	
	IN	CM	IN	CM	IN	CM	IN	CM
CHEST	13.8	35	14.5	38	16.1	41	17.9	45.5
FRONT LENGTH FROM HSP	19.7	50	21.5	54.5	23.2	59	25.9	65.75

JUNIOR'S BODYSUIT						
MONTHS	3-6		6-12		12-18	
	IN	CM	IN	CM	IN	CM
CHEST	9	23	9.5	24	10	25
FRONT LENGTH FROM HSP	15.5	40	16.5	42	17.5	44

JUNIOR'S LOGO TEE								
YEARS	2-3		3-4		4-5		5-6	
	IN	CM	IN	CM	IN	CM	IN	CM
CHEST	12.2	31	13	33	13.8	35	14.6	37
FRONT LENGTH FROM HSP	15	38	16.1	41	17.3	44	18.5	47



### LONG SLEEVE BODYSUIT, ASSORTED

3 PACK

AVAILABLE FOR DELIVERY NOW

Fabric: 100% cotton  
Graphics: Print on front & back

<b>SIZE:</b>	<b>PART #:</b>
3-6 MONTHS/ S	286880102
6-12 MONTHS/ M	286880103
12-18 MONTHS/ L	286880106



### SHORT SLEEVE BODYSUIT, ASSORTED

3 PACK

AVAILABLE FOR DELIVERY NOW

Fabric: 100% cotton  
Graphics: Print on front & back

<b>SIZE:</b>	<b>PART #:</b>
3-6 MONTHS/ S	286880202
6-12 MONTHS/ M	286880203
12-18 MONTHS/ L	286880206



### LOGO TEES, ASSORTED

2 PACK

AVAILABLE FOR DELIVERY NOW

Fabric: 100% cotton  
Graphics: Print on front & back

<b>SIZE:</b>	<b>PART #:</b>
2-3 YEARS/ XS	286886701
3-4 YEARS/ S	286886702
4-5 YEARS/ M	286886703
5-6 YEARS/ L	286886706



# INDIAN MOTORCYCLE® EYEWEAR



## IMC GOGGLE

AVAILABLE FOR DELIVERY NOW

CE



This custom Barstow goggle is a stylish and professional collaboration with 100%, featuring the custom jacquard logo of Indian Motorcycle® on the adjustable strap and etched logo on lens. It is equipped with triple-layer face foam providing excellent moisture management on the move and the gray anti-fog Lexan® lens with integrated pins for seamless tear off application. The upper vents in signature red force air in and channel out moisture to reduce fogging. CE certified; Directive 89/686/EEC. EN 1836:2005+A1:2007 Lens Filter Category 1.

ONE SIZE

2868961



// FINAL SEASON

## COSTE GOGGLE

AVAILABLE FOR DELIVERY NOW. FINAL SEASON

CE



This custom goggle is a stylish and professional collaboration with 100% and artist Dimitri Coste. It is equipped with triple-layer face foam providing excellent moisture management on the move and the gray anti-fog Lexan® lens have integrated pins for seamless tear off application. The upper vents in signature red force air in and channel out moisture to reduce fogging. CE certified; Directive 89/686/EEC. EN 1836:2005+A1:2007 Lens Filter Category 1.

ONE SIZE

2869713





## QUALITY TRUCKER HAT, BLACK

Fabric: Front: 100% cotton  
Back: 100% polyester mesh  
Features: Embroidered patch on front, curved skip

ONE SIZE 2862313



## CIRCLE PATCH HAT, MULTICOLOR

Fabric: 100% cotton  
Features: Embroidered graphic on front, graphic patch on the side, curved skip

ONE SIZE 2863628



## CIRCLE ICON TRUCKER HAT, OLIVE

Fabric: Front: 100% cotton  
Back: 100% polyester mesh  
Features: Embroidered patch, curved skip

ONE SIZE 2868694



## BLOCK PATCH HAT

Fabric: Front: 100% cotton  
Back: 100% polyester mesh  
Features: Logo patch, curved skip

ONE SIZE 2869641



## LOGO HAT, BLACK

Fabric: 100% cotton  
Features: Embroidered logo on front; contrast color under brim, curved skip

ONE SIZE 2863727



## PORT MARL HAT, RED

Fabric: Front: 100% cotton  
Back: 100% polyester mesh  
Features: Leather patch, curved skip

ONE SIZE 2869640



## BAKER BOY HAT, GRAY

Fabric: 50% wool, 50% polyester  
Features: Embroidered logo on back, quilted interior; snap down peak; curved skip

S/M 286896003  
L/XL 286896006



## ARMY HAT, GRAY

Fabric: 100% cotton  
Features: Embroidered logo on front, curved skip

ONE SIZE 2868945







NEW

ROGUE  
TRUCKER

## HIGH PROFILE BLOCK LOGO HAT, BLACK

Fabric: Front: 100% polyester,  
Back: 100% polyester mesh  
Features: Print on front, high profile fit, flat skip

ONE SIZE

2860747



FINAL SEASON

ROGUE

## IMC FLEX FIT HAT, BLACK

Fabric: 97% cotton, 3% spandex  
Features: Embroidered logo on front,  
woven patch on back, flex fit, flat skip

S/M  
L/XL

286869203

286869206



ROGUE  
TRUCKER

## CHECKERED HAT, BLACK

Fabric: Front: 100% cotton,  
Back: 100% polyester mesh  
Features: Embroidered logo on front, flat skip

ONE SIZE

2868959



NEW

MOTO

## HIGH PROFILE DENIM HAT, BLUE

Fabric: Front: 100% cotton,  
Back: 100% polyester mesh  
Features: Print on front, high profile fit, flat skip

ONE SIZE

2860745

TRUCKER



NEW

MOTO

## HIGH PROFILE PATCH HAT, BROWN

Fabric: Front: 100% cotton,  
Back: 100% polyester mesh  
Features: Woven patch on front, high  
profile fit, flat skip

ONE SIZE

2860746

TRUCKER



MOTO

## ICON LOGO HAT, MULTICOLOR

Fabric: 100% washed cotton canvas  
Features: Woven patch on front, flat skip

ONE SIZE

2869761



MOTO

## HEADDRESS LOGO HAT, GRAY

Fabric: Front: 100% cotton,  
Back: 100% polyester mesh  
Features: Embroidered patch, flat skip

ONE SIZE

2867609

TRUCKER



MOTO

## SCRIPT ICON TRUCKER HAT, MULTICOLOR

Fabric: Front: 100% cotton,  
Back: 100% polyester mesh  
Features: Embroidered patch on front, flat skip

ONE SIZE

2869639

TRUCKER



MOTO

## FTR™ 1200 TRUCKER HAT, MULTICOLOR

Fabric: Front: 100% polyester foam,  
Back: 100% polyester mesh  
Features: Oil based print, curved skip

ONE SIZE

2868958

TRUCKER



**MOTO**  
**TRUCKER**

### CAMO TRUCKER HAT, BLACK

Fabric: Front: 100% polyester foam,  
Back: 100% polyester mesh  
Features: Oil based print, flat skip

**ONE SIZE 2869703**



**NEW**

### HERITAGE WOMEN'S DIAMANTE CAP, BLACK

Fabric: 100% cotton  
Features: Diamante print on front, curved skip

**ONE SIZE 2860749**



### HERITAGE COTTON LINEN SCARF, MULTICOLOR

78.7" (200cm) x 19.7" (50cm).

Fabric: 55% cotton, 45% linen  
Features: Printed logos, wrinkle finish

**ONE SIZE 2864426**



### HERITAGE BE LEGENDARY™ BANDANA, MULTICOLOR

23.6" (60cm) x 23.6" (60cm).

Fabric: 100% cotton  
Features: Printed logos

**ONE SIZE 2867608**



### HERITAGE INDIAN MOTORCYCLE® BANDANA, RED

23.6" (60cm) x 23.6" (60cm).

Fabric: 100% cotton  
Features: Printed script & headdress logos

**ONE SIZE 2863846**



### HERITAGE HEADRESS MULTIFUNCTIONAL HEADWEAR, BLACK

Fabric: 100% polyester  
Features: All over print

**ONE SIZE**  
**HEADRESS 2869642**  
**ICON LOGOS 2865233**



### HERITAGE HEADRESS HEAD TIE, BLACK

Fabric: 100% cotton  
Features: All over print, elasticated rear band for adjustability

**ONE SIZE 2869643**



### HERITAGE HEAD TIE, BLACK

Fabric: 100% cotton  
Features: All over print, elasticated rear band for adjustability

**ONE SIZE 2865234**



### HERITAGE ICON HEAD WRAP

Embroidered patch logo at front and embroidered stitching at rear. Tie fasten back for close fit.

Graphics: Woven patch on front; embroidered script logo at rear Features: Tie fasten

**ONE SIZE 2867606**





NEW

ROGUE

Block Logo Beanie, Black

Fabric: 100% acrylic  
Features: Branded wrap twill label

ONE SIZE 2860751



NEW

MOTO

Shield Patch Beanie, Blue

Fabric: 100% acrylic  
Features: Logo patch on front

ONE SIZE 2860752



HERITAGE

Icon Fleece Beanie, Black

Fabric: Shell: 100% polyester fleece  
Lining: 95% cotton, 5% elastane  
Features: Embroidered logo on front and back, debossed logo on sides

ONE SIZE 2863997



NEW

HERITAGE

Ear Warmer, Black

Fabric: Shell: 95% polyester, 5% elastane  
Lining: 95% polyester, 5% elastane  
Features: Printed logo

ONE SIZE 2860742



NEW

HERITAGE

Reflective Logo Head Wrap, Black

Fabric: Shell: 95% polyester mesh, 5% elastane  
Lining: 95% polyester mesh, 5% elastane  
Features: Printed reflective logo

ONE SIZE 2860741



HERITAGE

Headdress Neck Warmer, Black

Fabric: Shell: 95% polyester, 5% elastane  
Lining: 95% cotton, 5% elastane  
Features: Printed logos, elastic toggle

ONE SIZE 2869764



HERITAGE

Head Wrap, Black

Fabric: Shell: 100% cotton  
Lining: 100% polyester mesh  
Features: Embroidered logo on front and back

ONE SIZE 2863844



HERITAGE

Icon Fleece Neck Warmer, Black

Fabric: Shell: 100% polyester fleece  
Lining: 95% cotton, 5% elastane  
Features: Embroidered logo on front and back, debossed logo on sides, elastic toggle

ONE SIZE 2863998



## DOG COLLAR

This black leather dog collar is lined with soft, quick dry neoprene for a comfortable fit. Silver reflective, secure buckle with engraved logo and D-ring and 5 punch holes. Available in two sizes. Size S/M: 1" (2.5cm) wide x 12.2" - 15.7" (31cm - 40cm) adjustable length. Size L/XL: 1.8" (3.5cm) wide x 16.1" - 19.7" (41cm - 50cm) adjustable length.

S/M 286969503  
L/XL 286969506



## DOG LEASH

Soft black leather, made to stand up to any active dog and their human. Design features neoprene lined handle for ultimate comfort. Secure chunky antique silver buckle with spring mechanism and embossed branding. 0.8" (2cm) wide x 63" (160cm) tall.

ONE SIZE 2869696



## FEEDING BOWL - 2 PACK

Our Indian Motorcycle® stainless steel dog bowl is perfect to feed your hungry pet. Bowls have printed logo, rubber bottom and polished finish for long-lasting beauty. Set includes two sizes: 21oz (610ml) & 32oz (910ml).

21oz. & 32oz. 2869699



## SQUEAK BALL - 5 PACK

Keep your pet happy with set of five Indian Motorcycle® Squeak Tennis Balls. Made from a tough tennis ball material with built in squeaker, they float in water making them perfect whatever your surroundings. 2.5" (6.4cm) wide.

2.5" 2869700



## CHEW TOY

This branded 100% natural rubber Indian Motorcycle® Chew Toy comes in a great shape for flinging, tugging and chewing. Great for dogs who love the standard bone shape. 2.8" (7cm) wide x 7.1" (18cm) tall.

2.8" x 7.1" 2869701



## PULL TOY

Our shaped rubber Indian Motorcycle® tank Pull Toy will provide interactive fun for you and your dog. The rugged ropes will help keep gums and teeth clean and healthy. The tank has star shaped holes on each end so you can stuff your pet with treats. 7.1" (18cm) tall.

7.1" 2869702



## WAXED COTTON BACKPACK

This waxed cotton backpack is stylish and large enough to carry everything from a laptop to a rain suit and much more. This backpack features premium heavy-duty waxed cotton canvas with leather trim and adjustable shoulder straps. Additional features include; fleece-lined laptop pocket, magnet closing on pockets and durable brass zippers. Bag dimensions: 19" (48cm) high x 13.3" (34cm) wide x 6.5" (17cm) deep.

**ONE SIZE      2868686**



## WAXED COTTON DUFFLE BAG

This large duffle is durable and designed to carry a wide variety of gear. This bag features premium heavy-duty waxed cotton canvas with leather trim. The large main cargo space closes with a heavy-duty brass zipper. Bag dimensions: 12.5" (32cm) high x 20" (51cm) wide x 9.4" (24cm) deep.

**ONE SIZE      2868687**



## WAXED COTTON MESSENGER BAG

This durable messenger bag is large enough to carry most laptops with 15" displays. This bag features premium heavy-duty waxed cotton canvas, and leather trim. Comes with an adjustable shoulder strap, and multiple interior pockets. Fleece-lined laptop compartment. Bag dimensions: 11.8" (30cm) high x 15" (38.5cm) wide x 5.4" (14cm) deep.

**ONE SIZE      2868688**



## WAXED COTTON WASH BAG

A classic wash bag takes on extra style with Indian Motorcycle® branding. This durable waxed cotton canvas bag features embossed leather Indian Motorcycle® branding and branded zipper pull. This bag is lined and roomy enough to carry toiletries or be used to carry other small items. Bag dimensions: 7.5" (19cm) high x 16" (40cm) wide x 6" (15cm) deep.

**ONE SIZE      2868690**



**NEW****ETA MARCH****IMC PERFORMANCE BACKPACK**

This technical backpack is functional and large. This backpack features highly protective compartment for laptops up to 15". There is large main compartment, front compartment with internal organization, pen slots and additional secure-zip pocket, external pocket for sunglasses, phone or keys. There are two external mesh water bottle pockets on the sides. The back straps are padded and adjustable. The mesh padded back panel is highly breathable. Bag dimensions: 19.7" (50cm) high x 13.8" (35cm) wide x 6.3" (16cm) deep.

**S/M****2860754****WAXED COTTON TOTE**

This waxed cotton women's tote is a stylish and durable option made of a premium heavy-duty waxed cotton canvas with leather trim and adjustable shoulder straps. Additional features include; internal zip pocket, magnetic closing on pockets and flap, protective zip on main compartment using a durable brass zipper. Bag dimensions: 14" (36cm) high x 18" (4cm) wide x 6" (15cm) deep.

**S/M****2868689**

# INDIAN MOTORCYCLE® BAGS & LUGGAGE



## WOMEN'S QUILTED PURSE

This women's purse features soft black leather, quilted panels, branded lining and multiple compartments. 3.9" (10cm) high x 7.7" (19.5cm) wide.

ONE SIZE 2868946



## BIKER CHAIN WALLET, BLACK

This wallet features high quality leather, embossed brand logo, branded lining, multiple compartments and a heavy metal chain. 3.7" (9.4cm) high x 7" (17.8cm) wide.

ONE SIZE 2867599



## TRI-FOLD WALLET, BLACK

This premium black leather Tri-Fold Wallet provides a spacious, efficient, secure, and stylish way to carry valuables. Features branded 100% cotton lining and embossed logo. This wallet comes with a branded gift box. 4.3" (11cm) high x 3.7" (9.5cm) wide.

ONE SIZE 2869645



## BI-FOLD WALLET, BLACK

This wallet features high quality leather, embossed brand logo and branded lining. 3.7" (9.5cm) high x 4.3" (11cm) wide.

ONE SIZE 2867600



## LEATHER FOB KEY CARRIER

Real leather pouch to carry your bike key FOB in style. Embossed lock and unlock detailing at the back. Magnetic snap fastener included. (Key FOB not included.) 5.5cm x 5.5cm.

ONE SIZE 2867558





NEW

## CHECKERED HEADDRESS SIGN

15.7" (40cm) wide x 11.8" (30cm) tall.

15.7" x 11.8"

2860759



NEW

## INDIAN MOTORCYCLE® RACING SIGN

14.2" (36cm) wide x 11.8" (30cm) tall.

14.2" x 11.8"

2860760



NEW

## BOMBER GIRL SIGN

15.7" (40cm) wide x 11.8" (30cm) tall.

15.7" x 11.8"

2860761



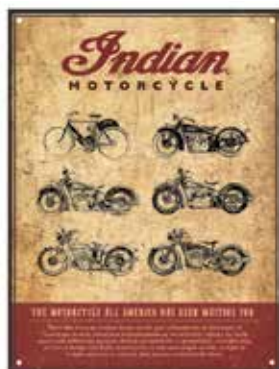
NEW

## CIRCLE ICON LOGO SIGN

12" (30.5cm) diameter.

12" DIA.

2860762



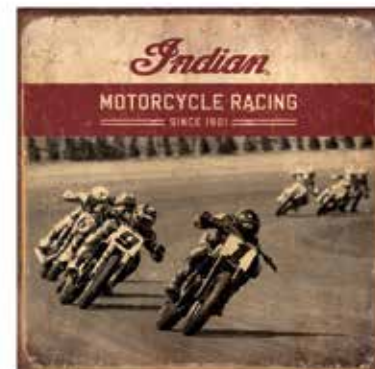
## MONTAGE SIGN

AVAILABLE FOR DELIVERY NOW

11.8" (30cm) wide x 15.7" (40cm) tall.

15.7" x 11.8"

2869769



## RACER SIGN

AVAILABLE FOR DELIVERY NOW

13.4" (34.1cm) wide x 13.4" (34.1cm) tall.

13.4" x 13.4"

2868949



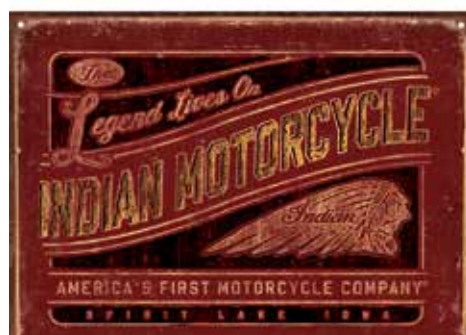
## WOODEN CHALK SIGN

AVAILABLE FOR DELIVERY NOW

15.7" (40cm) wide x 10.8" (27.5cm) tall.

15.7" x 10.8"

2868948



## LEGEND LIVES SIGN

AVAILABLE FOR DELIVERY NOW

15.7" (40cm) wide x 11.8" (30cm) tall.

15.7" x 11.8"

2869768



## GENUINE PARTS & ACCESSORIES SIGN

AVAILABLE FOR DELIVERY NOW

15.7" (40cm) wide x 11.8" (30cm) tall.

15.7" x 11.8"

2864421





#### CORRUGATED SIGN

15.7" (40cm) wide x 11.8" (30cm) tall.

15.7" x 11.8"

2869767



#### CIRCLE WOODEN SIGN

AVAILABLE FOR DELIVERY NOW

Diameter: 15.7" (40cm).

15.7" DIA.

2869766



#### FIRST MOTORCYCLE SIGN

AVAILABLE FOR DELIVERY NOW

15.7" (40cm) wide x 11.8" (30cm) tall.

15.7" x 11.8"

2864420



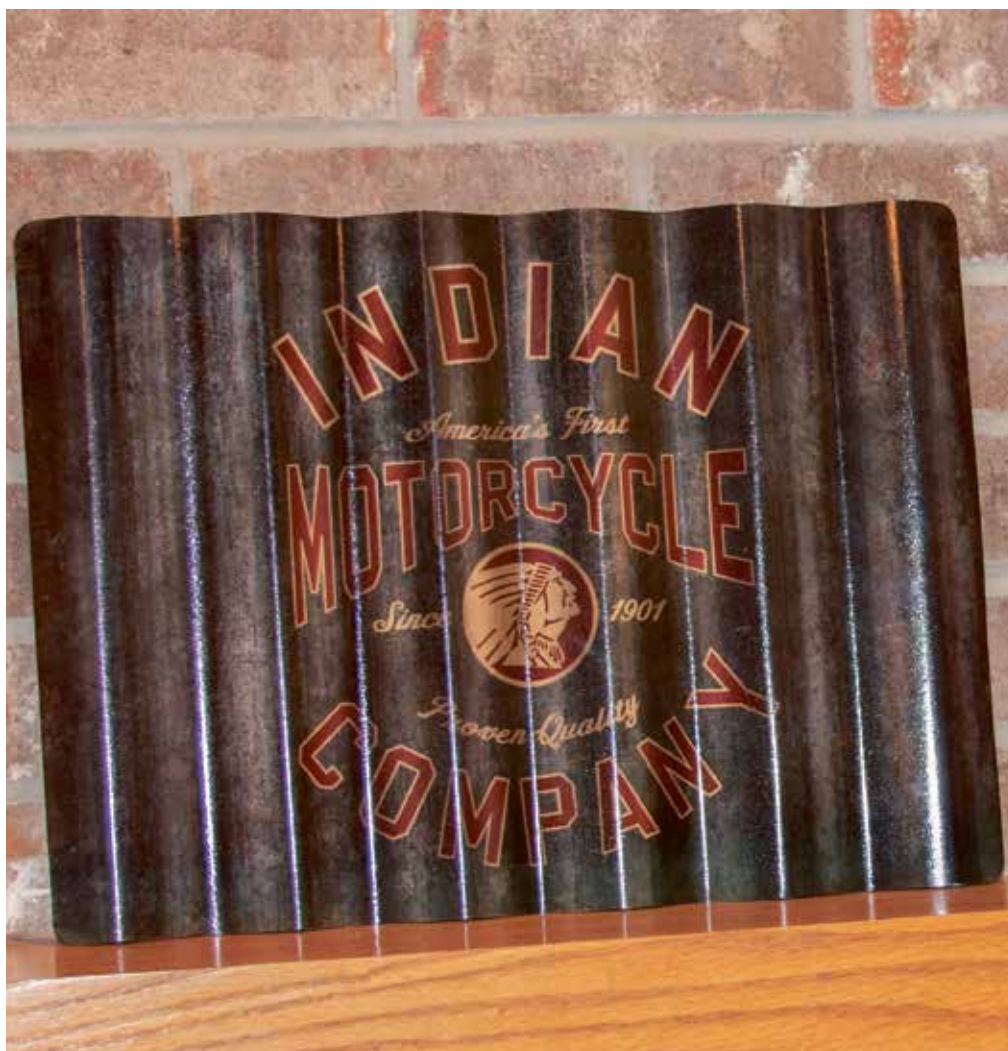
#### ANTIQUE SIGN

Own a piece of historical Indian Motorcycle® marketing drawing with this Antique metal sign.

15.7" (40cm) wide x 11.8" (30cm) tall.

15.7" x 11.8"

2864425







### CIRCLE BOMBER GIRL METAL SIGN

Vintage inspired, this is an iconic sign with the retro styled pin-up girl. 12" (30.5cm) diameter.

12" DIA. 2868947



### 1914 ENGINE SIGN

Fancy the sophisticated industrial drawings derived from the past? Sign features an embossed effect on the engine. 11.8" (30cm) wide x 15.7" (40cm) tall.

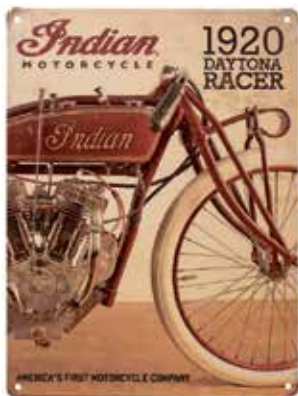
11.8" x 15.7" 2864423



### SCOUT® 45 SIGN

Go back to history with this Indian® Scout® 45 metal sign—The Police Special. "Motorcycling is the quickest transportation on the earth." 15.7" (40cm) wide x 11.8" (30cm) tall.

15.7" x 11.8" 2864422



### 1920 DAYTONA RACER SIGN

This 1920 Daytona Racer metal sign will definitely arise your good old memories with its white rubber tires. 11.8" (30cm) wide x 15.7" (40cm) tall.

11.8" x 15.7" 2864424



### GLASS BEER MUG

Textured beer glass with Indian Motorcycle® logo decal. Dishwasher safe. 21oz. (610ml). 3.4" (8.7cm) wide x 6.3" (16cm) tall.

21 OZ 2867604



### INDIAN MOTORCYCLE® SCOUT® MUG

Dishwasher safe. Contrast rim color with Indian Scout® logo. Hard wearing travel accessory for road trips or the kitchen. 5.5" (14cm) wide x 3.5" (9cm) tall.

17 OZ 2863947



### INDIAN MOTORCYCLE® PINT GLASS

Embossed tall pint glass. Dishwasher safe. 17.6oz. (500ml). Base: 2.7" (6.8cm) wide Top: 3.1" (7.9cm) wide x 9.6" (24.5cm) tall.

17.6 OZ 2867603



### INDIAN MOTORCYCLE® EMBOSSED MUG

Embossed Indian Motorcycle® logo. Microwave & dishwasher safe. 17.6oz. (500ml). 3.5" (9cm) wide x 4.1" (10.4cm) tall.

17.6 OZ 2867601



### LOGO BARREL MUG

Barrel shaped mug with a matte black finish. Microwave & dishwasher safe. 18.6oz. (530ml). 5.2" (13.3cm) wide x 4.3" (11cm) tall.

18.6 OZ 2867602

# INDIAN MOTORCYCLE® MAN CAVE, GARAGE & OUTDOOR



## HOME RUG

Featuring the icon and headdress logos, this home rug will complete the total look of your man cave.  
Size: 116.2" (295cm) x 76.8" (195cm).

116.2" x 76.8" 2864417



## WOOL THROW

This high quality, hardy and timeless wool throw with iconic headdress logo will provide you with the comfort and warmth you need.  
Machine washable. Made in USA.

80" x 50" 2864414



## DOOR MAT

Featuring the Indian Motorcycle® icon logo, this door mat will complete the look of your man cave or home. Size: 35.4" (90cm) x 23.6" (60cm).

35.4" x 23.6" 2869779



## HEADDRESS TOWEL

Featuring the headdress and script logos, this oversized towel will provide you with the comfort you need.  
Size: 61.8" (157cm) x 31.5" (80 cm).

61.8" x 31.5" 2869650



## LOGO BIKE MAT

A heavy-duty garage mat to park your bike on or kneel on while doing maintenance. Mat is 103.9" (264cm) x 52.4" (133cm).

103.9" x 52.4" 2863879





## INDIAN MOTORCYCLE® HEADRESS FRIDGE MAGNETS

Give your fridge real Indian Motorcycle® style. Set includes two headdress shaped magnets in different colors. 3.1" (8cm) wide.

SET OF 2 2869772



## INDIAN MOTORCYCLE® ICON FRIDGE MAGNETS

Give your fridge real Indian Motorcycle® style. Set includes two circle magnets with different logos and colors. 2.4" (6cm) wide.

SET OF 2 2869785



## INDIAN MOTORCYCLE® SCRIPT FRIDGE MAGNETS

Give your fridge real Indian Motorcycle® style. Set includes two rectangle magnets in different colors. 3.1" (8cm) wide.

SET OF 2 2869786



## 2 IN 1 HEADRESS STOPPER

Enjoy wine without the troubles of too many gadgets laying around. This 2-in-1 Headdress Corkscrew and Wine Stopper will serve all your needs. Keep it at home or carry on road trips. 3.1" (7.8cm) x 5.1" (13cm).

3.1" x 5.1" 2869652



## INDIAN MOTORCYCLE® BADGE LOGO BOTTLE OPENER

Pop tops in style with this premium metal bottle opener. It features a stylish design, efficient bottle opener, and red and silver Indian Motorcycle® logo. 2.4" (6cm) wide x 3.3" (8.5cm) tall.

2.4" x 3.3" 2863852



## INDIAN MOTORCYCLE® SLAP KOOZIE

Keep your beverage cool and your hands warm with the Indian Motorcycle® slap koozie. 9" (23cm) wide x 3.1" (8cm) tall.

9" x 3.1" 2863959



## ICON COASTERS

Enjoy your beverage while protecting your table or bar with Indian Motorcycle® rubber coasters. Diameter: 3.5" (9cm).

SET OF 6 2869773



## WALL CLOCK

AVAILABLE FOR DELIVERY NOW

Brighten your man cave with the glow of the Indian Motorcycle® Wall Clock. This gloss black framed wall clock features a speedometer graphic which delivers precise and accurate time. Diameter: 11.8" (30cm). Depth: 2" (5cm).

11.8" DIA. 2869651



# INDIAN MOTORCYCLE® GIFTS & COLLECTIBLES



**BLACK LEATHER BELT**

S-2XL

2869776



**ICON BELT BUCKLE**

3.6" WIDE

2869712



**HEADDRESS BELT BUCKLE**

3.6" WIDE

2869711



**MEN'S CIRCLE BUCKLE**

3.3" WIDE

2863822



**NEW**

**SCRIPT LOGO RUBBER KEY RING**

1.6" DIA.

2860769



**NEW**

**METAL HEADDRESS KEY RING**

5.1" WIDE

2860770



**FTR™ 1200 RUBBER KEY RING**

5.9" X 2.2"

2869775



**ICON RUBBER KEY RING**

1.8"

2869649



**HEADDRESS RUBBER KEY RING**

AVAILABLE FOR DELIVERY NOW

1.2" X 4.7"

2863982



**SCRIPT LEATHER KEY RING**

AVAILABLE FOR DELIVERY NOW

1.2" X 4.7"

2863926



**ICON LEATHER KEY RING**

2.2" X 3.9"

2869774



**ICON LEATHER KEY RING**

2.2" X 3.5"

2863965



**LOGO PATCH**

4.3" WIDE

2863861



**COLORLED HEADDRESS PATCH**

4.5" WIDE

2863864



**CIRCLE ICON PATCH**

3.1" WIDE

2863862



**INDIAN® SPORT SCOUT®  
1:12 SCALE**

1:12 SCALE

2863683





### TANK BADGE PINS

1.77CM WIDE

<b>A</b> SCOUT®	2869780
<b>B</b> CHIEF® CLASSIC	2869782
<b>C</b> SCOUT® SIXTY	2869781
<b>D</b> ROADMASTER®	2869783



### INDIAN MOTORCYCLE® LOGO PIN

1.2" WIDE 2863673



### INDIAN MOTORCYCLE® CIRCLE ICON PIN

1" WIDE 2863674



### INDIAN MOTORCYCLE® HEADDRESS PINS

1.6" WIDE  
BROWN 2863676  
COLORED 2863675



### FTR™ 1200 STICKER SET

Not for motorcycle bodywork.

13.25" x 8.5" 2869778



### INDIAN MOTORCYCLE® STICKER SET

Not for motorcycle bodywork.

13.25" x 8.5" 2863865

# INDIAN MOTORCYCLE® POLISHES



## NO RINSE WASH & SHINE

This environmentally friendly product offers a fast, convenient way to wash a motorcycle with absolutely no rinsing. Simply add 1 ounce to a 2 gallon bucket of water, soak an Indian® Microfiber Towel in the bucket and wash a section at a time. This unique formula encapsulates the dirt, lifting it away from the surface allowing you to finish by simply drying with a clean Indian® Microfiber Towel. No streaks, smears or scratches.

**SIZE:** 16 OZ/ 12PK  
**PART #:** 2863892



## INSTANT DETAILER & SHINE

Detail in minutes with Instant Detailer and Shine. Spray it on a microfiber towel or directly on the bike to remove dirt and bugs. Use on windshields, bodywork and chrome. Safe for use on plexiglas, lexan®, acrylic, or factory coated windshields.

**SIZE:** 16 OZ/ 12PK  
**PART #:** 2863893



## ENGINE ENHANCER

Engine Enhancer is specially designed to preserve and restore the beauty of an engine and related parts. It provides a durable, factory finish without greasy or oily residue.

**SIZE:** 16 OZ/ 12PK  
**PART #:** 2863894



## WHITE WALL & WHEEL CLEANER

This non-corrosive cleaner will safely dissolve and remove grease, oil, road dirt, and brake dust from motorcycle tires and wheels. It is excellent for use on white wall tires, and is a biodegradable cleaner that is safe for all wheels, such as chrome, aluminum, clear or powder-coated wheels.

**SIZE:** 16 OZ/ 12PK  
**PART #:** 2863895



## SPRAY WAX & PROTECTANT

Spray Wax & Protectant can be used on any clean surface, wet or dry, and it will produce a durable, high-gloss shine with minimal effort. It contains no petroleum distillates or silicone.

**SIZE:** 16 OZ/ 12PK  
**PART #:** 2863896



## SUPER PLUSH M/F TOWEL-TWIN PACK

The only towels a rider should use on a motorcycle, these 100% microfiber towels won't scratch any surface. They are extremely plush, can be used with chemicals and cleaners, and are machine washable. Sold in packs of two towels.

**SIZE:** PK/ 24PK  
**PART #:** 2863897



## TRAVEL PACK

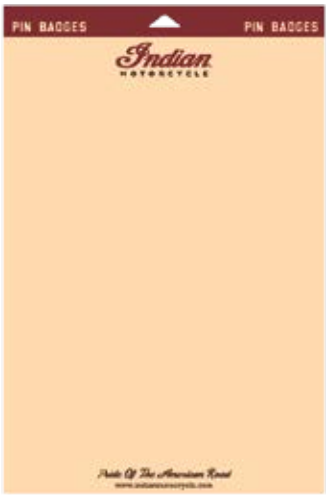
A rider can keep an Indian Motorcycle® looking great while traveling by carrying this Travel Pack. It includes 4 oz. bottles of Bike Wash Concentrate, Spray & Wipe Instant Detailer, Liquid Spray Wax, and Leather, Vinyl & Rubber Conditioner, plus a plush microfiber towel.

**SIZE:** 12PK  
**PART #:** 2863898



HEADADDRESS LOGO LINEN SCARF  
PAGE 56





SHOWBOARD FOR PINS

Display comes with a space for 48 pins.  
(For dealer use only)

13" x 8.7"                      2869784

CASUALWEAR HANGER  
(NOT PICTURED)

Order in multiples of 10.

ONE SIZE                      2863397



When you're enjoying your new Indian Motorcycle®, always wear a helmet and protective eyewear and clothing and insist that your passenger do the same. Ride within the limits of the law and your own abilities. Read and understand your owner's manual. Never ride under the influence of drugs or alcohol. Indian Motorcycle® strongly recommends that all riders take a Motorcycle Safety Foundation® Rider Course. For a course near you, call 1-800-446-9227. Protect riders' rights by joining the American Motorcyclist Association. For the name of your nearest Indian Motorcycle® dealership, call 1-800-POLARIS or visit our website at IndianMotorcycle.com. All riders are professionals and on a closed course. To the best knowledge of Polaris Industries Inc., the specifications, descriptions, and illustrative material contained herein are accurate as of the date this catalog was approved for printing. Indian Motorcycle® reserves the right, without prior notice, to discontinue at any time at its discretion any of the items herein or change specifications or designs without incurring any obligation to the customer. All items are subject to availability and prior sales by our dealers. Location photography by Todd Williams Photography. Studio Photography by SAGA Marketing. Catalog design by SAGA Marketing. Printed in the USA.

Indian® and Indian Motorcycle® are registered trademarks of Indian Motorcycle International, LLC. 3M® is a registered trademark of 3M Company. American Flat Track™ is a trademark of Daytona Motorsports Group. Bluetooth® is a registered trademark of Bluetooth Sig, Inc. Debonaire® is a registered trademark of Durfort Holdings, S.A. King Baby® is a registered trademark of King Baby Studio, Inc. Jack Daniel's® is a registered trademark of Jack Daniel's Properties, Inc. Lexan® is a registered trademark of Sabic Innovative Plastics IP B.V. NuShoe® is a registered trademark of NuShoe, Inc. Pinlock® is a registered trademark of Pinlock Patent B.V. besloten vennootschap (b.v.). Red Wing® and Red Wing Shoes® are registered trademarks of Red Wing Shoe Company, Inc. Velcro® is a registered trademark of Velcro Industries B.V. Ltd Co. Netherlands. Vibram® is a registered trademark of Vibram S.P.A. Corporation Italy. YKK® is a registered trademark of YKK Corporation.